

Features

- Frequency Range: 0.6~2.5GHz
- Standard Hermetic Package
- Operating Temperature Range: -55°C ~ +85°C

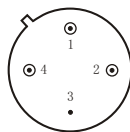
Specifications (50 Ω, V_{CC} = +5V, T_A = -55°C ~ +85°C)

Parameter	Symbol	Unit	Guaranteed	Typical
Frequency Range	f _L ~f _H	GHz	0.6~2.5	0.6~2.5
Gain	G _p	dB	≥12.0	13.5
Gain Flatness	ΔG _p	dB	≤±1.0 Δ	±0.5
Noise Figure	F _n	dB	≤4.5	2.9
Input VSWR	VSWR _i	---	≤2.0:1 Δ	1.7:1
Output VSWR	VSWR _o	---	≤2.0:1 Δ	1.8:1
Saturation Output Power	P ₀	dBm	≥18.0 Δ	19.5
DC Current	I _{CC}	mA	---	65

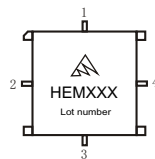
“Δ” T_A = 24 ± 1°C;

Maximum Rating

DC Voltage : +6VDC
RF Input: +15dBm
Storage Temp: +125°C



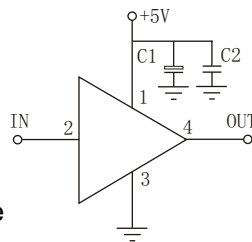
TO-8A



SMO-8C

Application Notes

1. Typical application shown as right, C₁ = 10~33 μF ; C₂ = 3300~6800pF;
2. See assembly section for mounting information
3. Connectorized package(SMA-1)available
4. ESD observe handling precautions



Typical Curves

