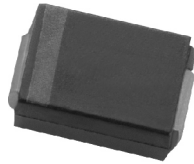


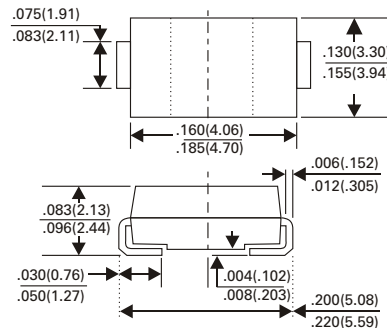
RS1AB thru RS1MB

SURFACE MOUNT FAST RECOVERY RECTIFIER

VOLTAGE - 50 TO 100 VOLTS CURRENT - 1.0 AMPERES



SMB/DO-214AA



Dimensions in inches and (millimeters)

FEATURES

- Ideal for surface mount applications
- Glass Passivated Chip
- Low Reverse Leakage Current
- Low Forward Voltage Drop And High Current Capability
- Plastic Material Has UL Flammability Classification 94V-0

MECHANICAL DATA

Case : JEDEC DO-214AA molded plastic
 Epoxy : UL 94V-0 rate flame retardant
 Metallurgically bonded construction
 Polarity : Color band denotes cathode end
 Mounting position : Any
 Weight : 0.003 Ounce, 0.093 grams

MAXIMUM RATINGS AND ELECTRICAL CHARACTERISTICS

Ratings at 25°C ambient temperature unless otherwise specified
 Single phase, half wave, 60Hz, resistive or inductive load
 For capacitive load, derate current by 20%

	SYMBOL	RS1AB	RS1BB	RS1DB	RS1GB	RS1JB	RS1KB	RS1MB	UNITS
Maximum Repetitive Peak Reverse Voltage	V_{RRM}	50	100	200	400	600	800	1000	Volts
Maximum RMS Voltage	V_{RMS}	35	70	140	280	420	560	700	Volts
Maximum DC Blocking Voltage	V_{DC}	50	100	200	400	600	800	1000	Volts
Maximum Average Forward Rectified Current .0375" (9.5mm) Lead Length at $T_A = 55^\circ C$	$I_{(AV)}$	1.0							Amps
Peak Forward Surge Current 8.3ms Single Half Sine-Wave Superimposed on Rated Load (JEDEC Method)	I_{FSM}	30							Amps
Maximum Instantaneous at 1.0A DC	V_F	1.3							Volts
Maximum DC Reverse Current @ $T_A = 25^\circ C$ at Rated DC Blocking Voltage @ $T_A = 100^\circ C$	I_R	5.0 100							μA
Maximum Reverse Recovery Time	T_{RR}	150			250		500		nS
Typical Junction Capacitance	C_J	15							pF
Operating Temperature Range	T_J	+175							$^\circ C$
Storage Temperature Range	T_{STG}	-65 to +175							$^\circ C$

NOTES :

1. Measured at 1 MHz and applied reverse Voltage of 4.0VDC
2. Thermal Resistance Junction to case

RS1AB thru RS1MB

SURFACE MOUNT FAST RECOVERY RECTIFIER

RATING AND CHARACTERISTICS CURVES RS1AB THRU RS1MB

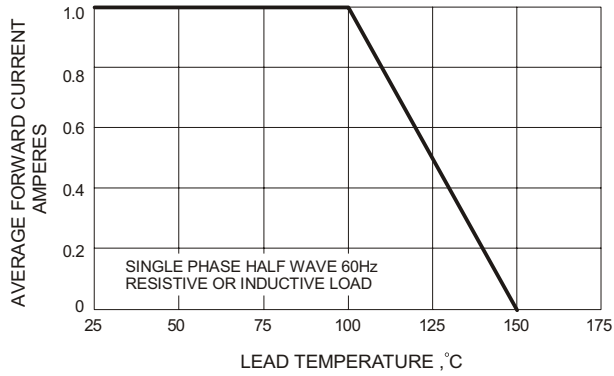


FIG.1 Forward Current Derating Curve

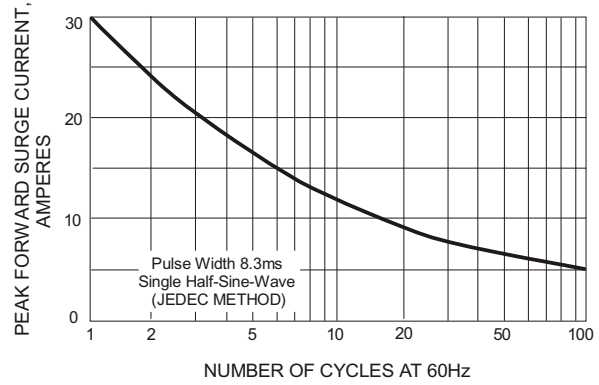


FIG.2 Maximum Non-Repetitive Surge Current

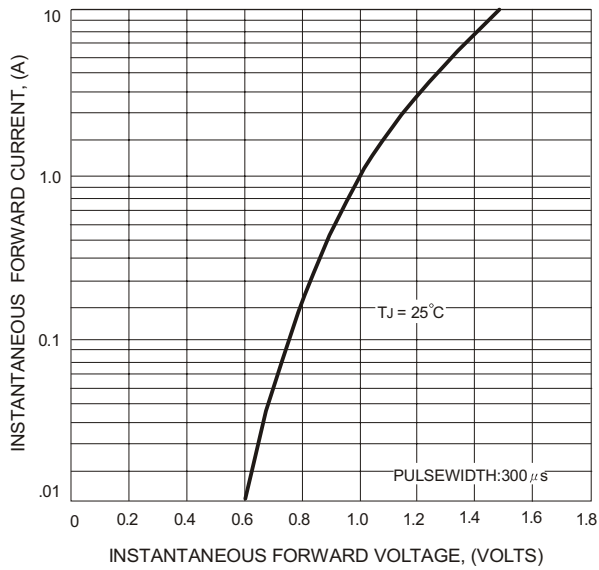


FIG.3 Typical Forward Characteristics

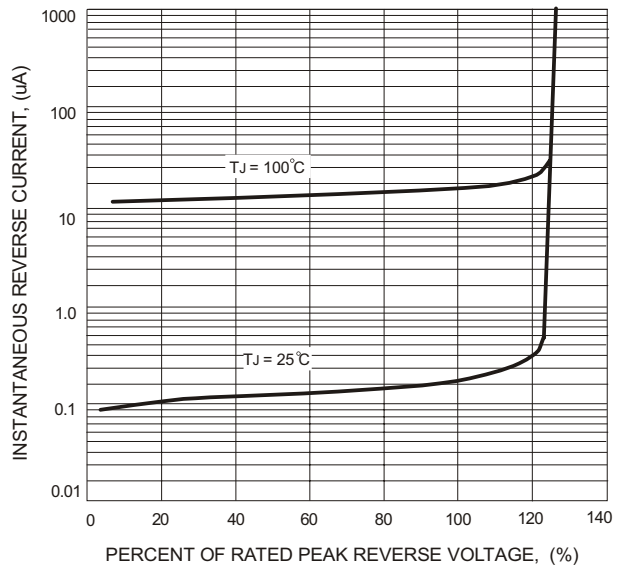


FIG.4 Typical Reverse Characteristics