



TAI-SAW TECHNOLOGY CO., LTD.

No. 3, Industrial 2nd Rd., Ping-Chen Industrial District,
Taoyuan, 324, Taiwan, R.O.C.

TEL: 886-3-4690038 FAX: 886-3-4697532

E-mail: tstsales@mail.taisaw.com Web: www.taisaw.com

Approval Sheet For Product Specification

Issued Date: June, 8, 2004

Product Name: SAW Filter 1880 MHz SMD 3X3 mm

TST Parts No.:TA0294A

Customer Parts No.:_____

| |
|--------------------|
| Company:_____ |
| Division:_____ |
| Approved by :_____ |
| Date:_____ |

Checked by:_____ Bob Chau

Approval by:_____ Francis Chen

Date:_____ 6, 8, 2004



TAI-SAW TECHNOLOGY CO., LTD.

No. 3, Industrial 2nd Rd., Ping-Chen Industrial District,
Taoyuan, 324, Taiwan, R.O.C.

TEL: 886-3-4690038 FAX: 886-3-4697532

E-mail: tstsales@mail.taisaw.com Web: www.taisaw.com

SAW Filter 1880 MHz for PCS

MODEL NO.: TA0294A

REV. NO.:2

A. MAXIMUM RATING:

1. Input Power Level: 10 dB_m
2. DC voltage: 5 V
3. Operating Temperature: -30°C to +85°C
4. Storage Temperature: -40°C to +85°C

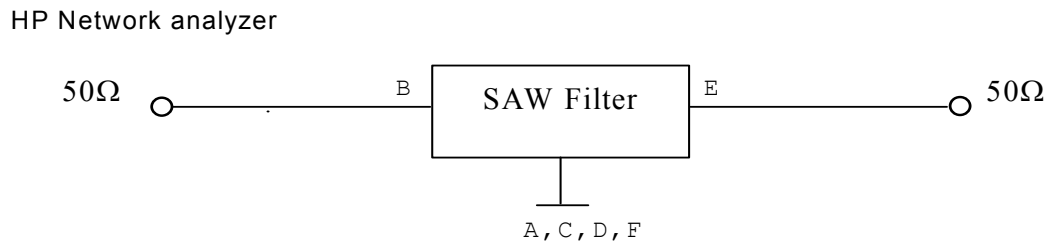
RoHS Compliant
Lead free
Lead-free soldering

B. ELECTRICAL CHARACTERISTICS:

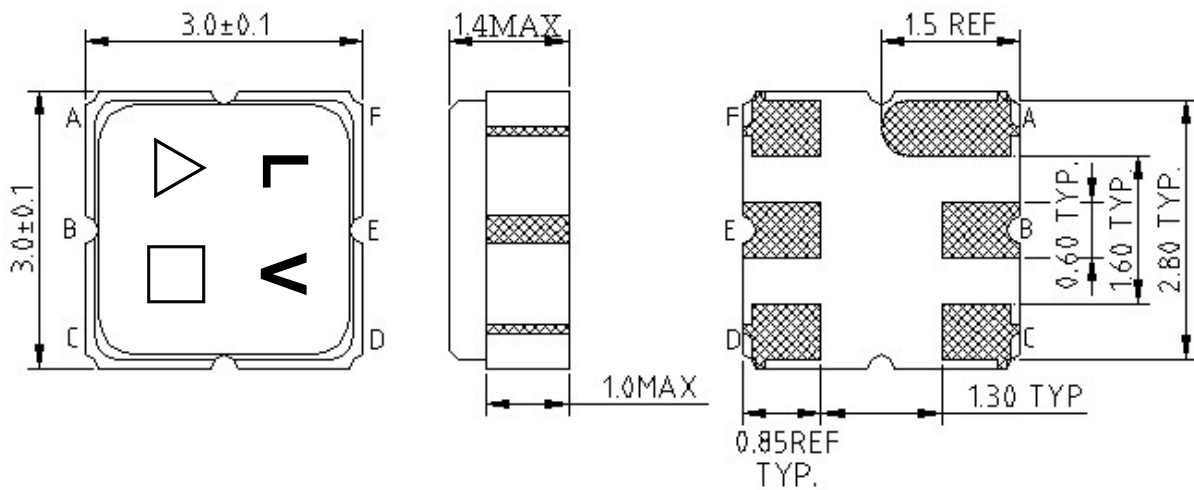
| Item | | Min. | Typ. | Max. |
|---|---------------------------|------|------|------|
| Center frequency | F_c (dB) | - | 1880 | - |
| Insertion loss (1850~1910 MHz) | IL (dB) | - | 2.45 | 4.0 |
| Amplitude ripple (1850~1910 MHz) | (dB) | - | 1.2 | 2.5 |
| Attenuation (Reference level from 0 dB) | | | | |
| D.C. ~ 1660 | MHz (dB) | 20 | 32 | - |
| 1660 ~ 1721 | MHz (dB) | 30 | 35 | - |
| 1721 ~ 1800 | MHz (dB) | 20 | 37 | - |
| 1930 ~ 1990 | MHz (dB) | 7 | 19 | - |
| 2000 ~ 2040 | MHz (dB) | 25 | 37 | - |
| 2040 ~ 2480 | MHz (dB) | 31 | 38 | - |
| 3700 ~ 3820 | MHz (dB) | 25 | 35 | - |
| Input/Output Return Loss (1850~1910 MHz) | | 7.4 | 13 | - |
| Source impedance | Z _s (Ω) | - | 50 | - |
| Load impedance | Z _L (Ω) | - | 50 | - |

Note1. The standard definitions is in JIS C 6703

C. MEASUREMENT CIRCUIT:



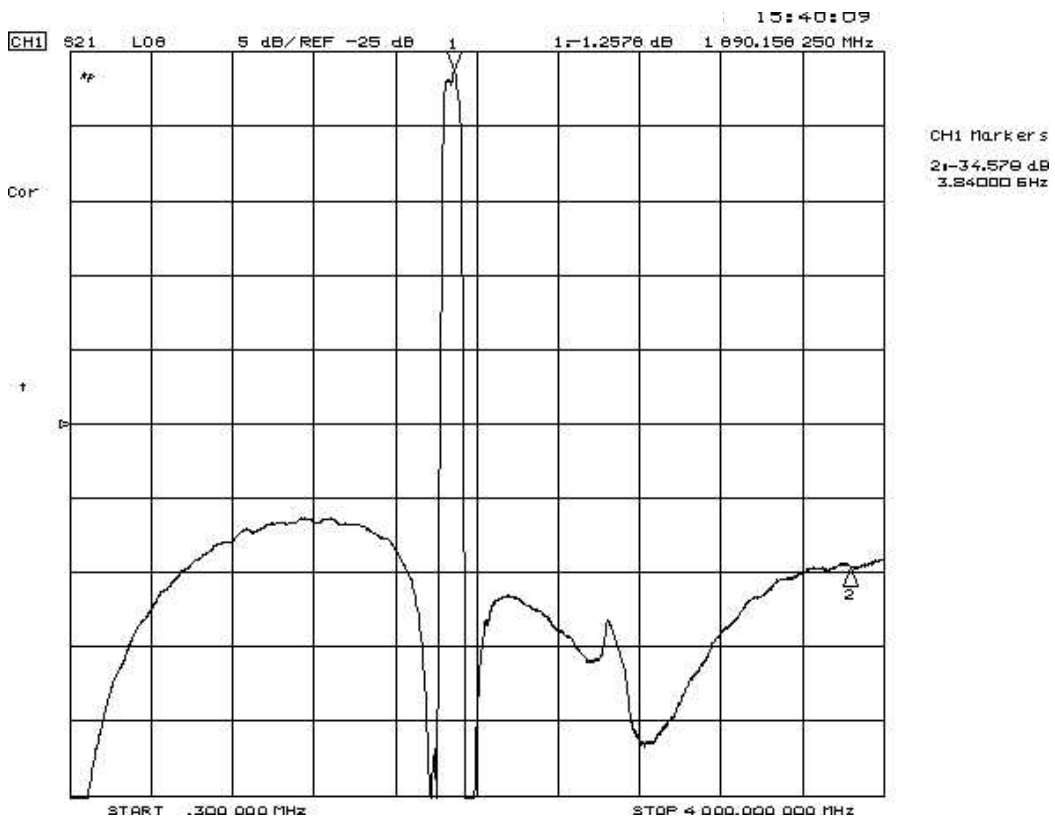
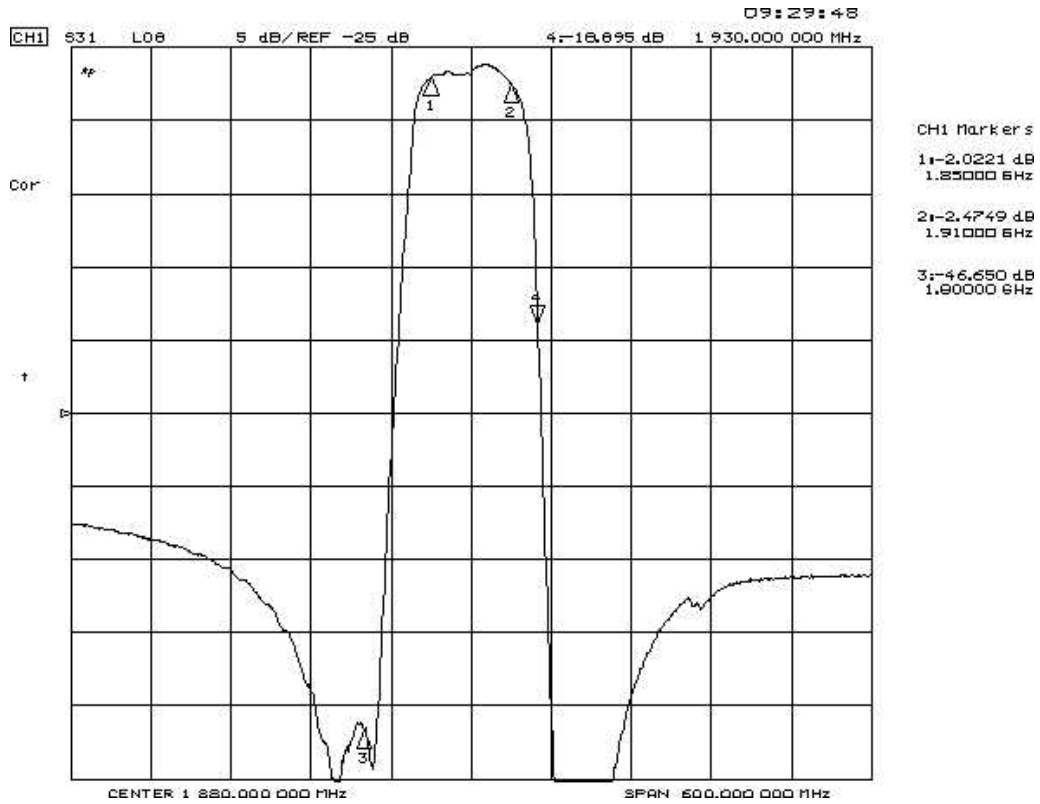
D. OUTLINE DRAWING:



B INPUT
 E OUTPUT
 A,C,D,F GROUND
 DIMENSION : mm

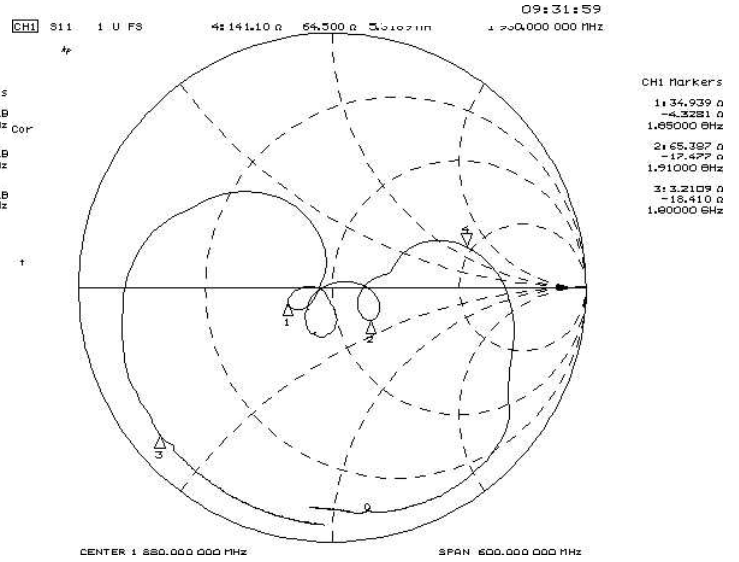
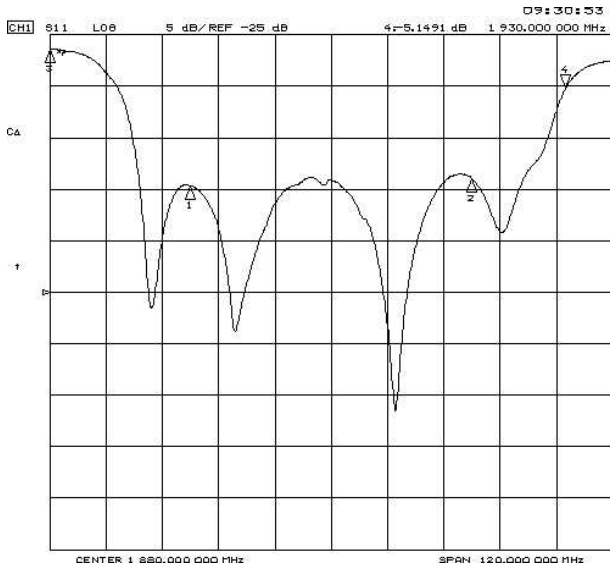
△ : Year Code
 □ : Date Code

E. Frequency Characteristics : Transfer function

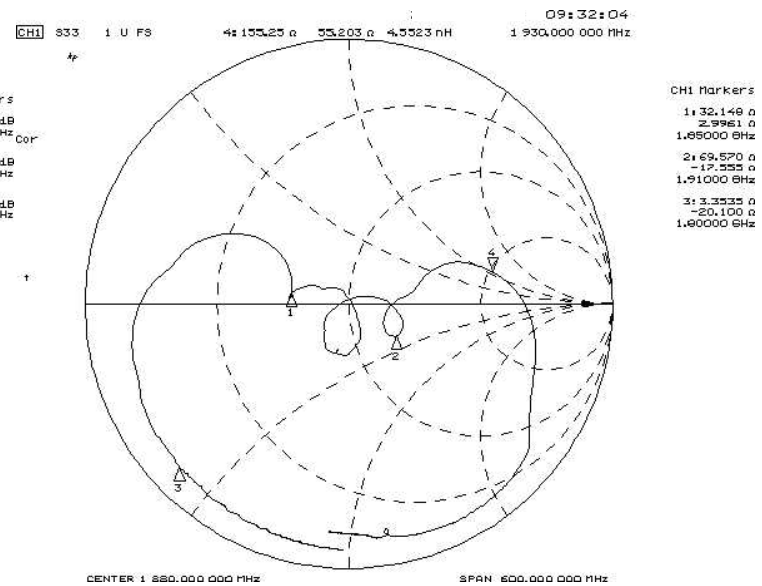
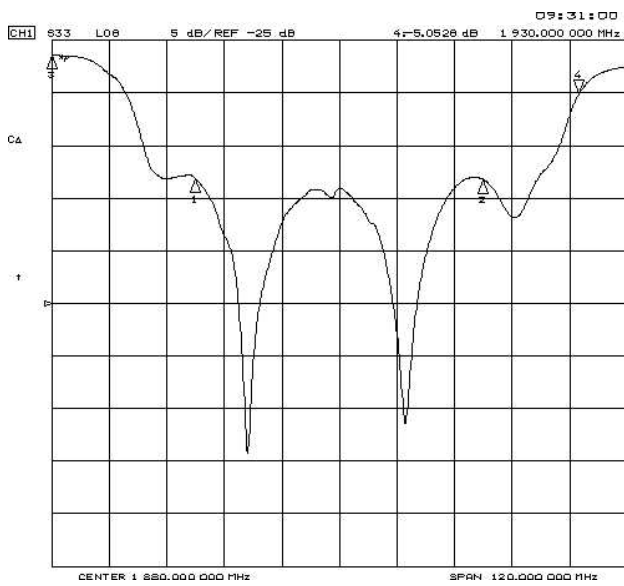


Reflections Functions :

S11

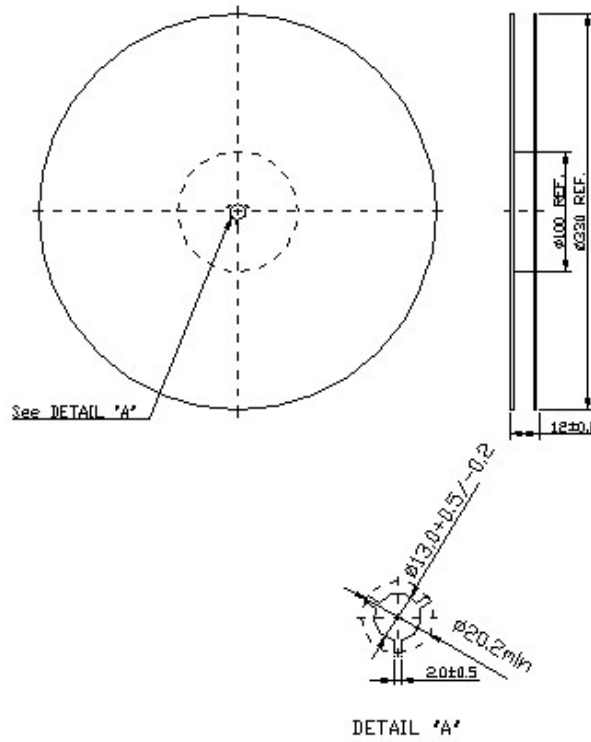


S22



F. PACKING:

1. REEL DIMENSION



2. TAPE DIMENSION

