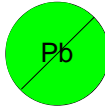


These components are RoHS compliant

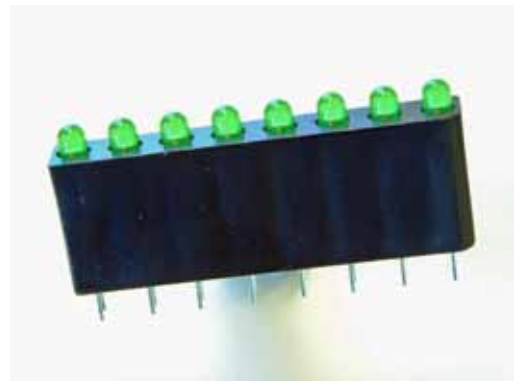
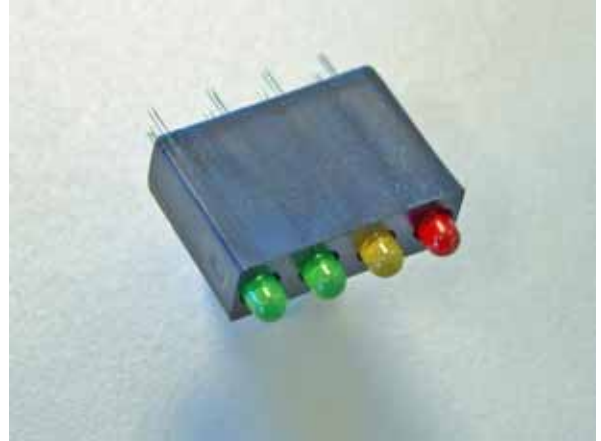


# SSA350/4 SSA350/8 3mm LED Linear Array

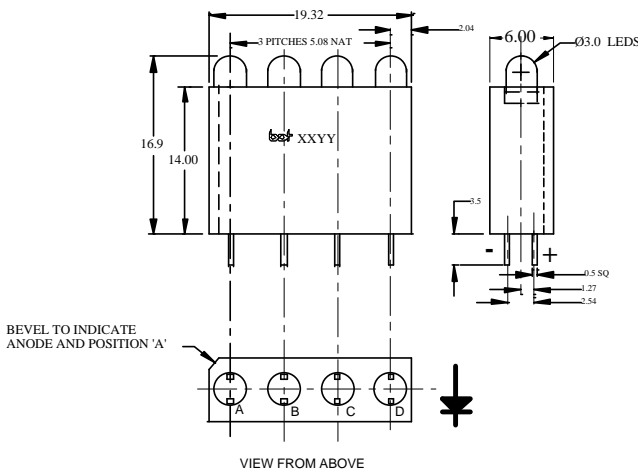
SSA 350 is a precision moulded plastic mounting block for T1 size Light Emitting Diodes. LEDs are on a 5.05mm pitch. Material is black nylon 6 to flammability specification UL-94VO.

## FEATURES

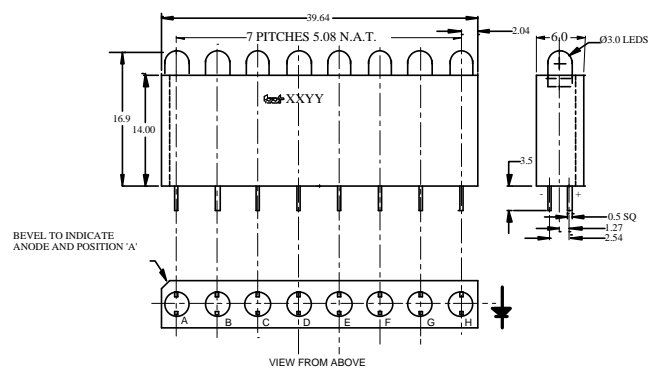
- ◆ Four & Eight channel block, end stackable for longer arrays.
- ◆ +/- 30 deg viewing angle.
- ◆ Will accept T1 infra red emitters or sensors.
- ◆ Small PCB footprint.
- ◆ Leads on 0.1 inch pitch double row.
- ◆ Less than eight positions available to special order.



## MECHANICAL DATA



SSA350/4



SSA350/8

**BEDFORD OPTO TECHNOLOGY LTD**  
**1 BIGGAR BUSINESS PARK, BIGGAR, LANARKSHIRE ML12 6FX**  
 Tel: +44 (0) 1899 221221 Fax: +44 (0) 1899 221009  
 Website: bot.co.uk E-mail: bill@bot.co.uk

**ABSOLUTE MAXIMUM RATING per LED**

PARAMETER	All colous	Blue	Units
Reverse Voltage	6	5	V
Forward Current	30	20	mA
Surage Current (t>10us)	1	0.1	A
Storage Temperature Range	-55 to +100	-40 to +100	°C
Junction Temperature (Tj)	100	100	°C
Total Power Dissipation @ 25 °C	100	100	mW
Thremal Resistance Juction to Air	400	400	K/W

**ELECTRICAL CHARACTERISTICS** (Tamb=25°C)

Parameter	Unit	Colour				
		Orange	HERed	Yellow	Green	Blue
Peak Wavelength $\lambda_p$	nm	605	635	585	565	428
Forward Voltage Vf (If = 20mA)	Volts Max	3	3	3	3	4.5
Reverse Current Ir (Vr = 6Volts)	$\mu$ A Max	10	10	10	10	5
Luminous Intensity (If = 10mA)	Mcd min	1.6	6.3	6.3	6.3	6.3

**Ordering Information**

To specify your requirement, please state:

1 4 way SSA350/4, 8 way SSA350/8

2 The combination of LEDs in order.

SSA-350/8 A through to H

where X = O = All Orange, H = All HERed, Y = All Yellow, G = All Green

For mixed colours specify from left to right. E.g. SSA-350/8 HHGYYGRR

1st Element to 8th Element

Custom part numbers will be issued for these combinations.

**BEDFORD OPTO TECHNOLOGY LTD**  
**1,BIGGAR BUSINESS PARK, BIGGAR,LANARKSHIRE ML12 6FX**

**Tel: +44 (0) 1899 221221 Fax: +44 (0) 1899 221009**

**Website: bot.co.uk E-mail: bill@bot.co.uk**