

Features

- Frequency Range: 10~500MHz
- Active Bias Design Supply Temperature Compensation
- Standard Hermetic Package
- Operating Temperature Range: -55°C ~ +85°C

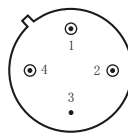
Specifications (50 Ω, V_{CC} = +15V, T_A = -55°C ~ +85°C)

Parameter	Symbol	Unit	Guaranteed	Typical
Frequency Range	f _L ~f _H	MHz	10~500	10~550
Gain	G _p	dB	≥28.0	29.0
Gain Flatness	ΔG _p	dB	≤±0.5	±0.3
Noise Figure	F _n	dB	≤2.0 Δ	1.7
Input VSWR	VSWR _i	—	≤1.5:1	1.3: 1
Output VSWR	VSWR _o	—	≤2.0:1	1.8: 1
Output Power @ 1dB Compression	P-1	dBm	≥6.0 * Δ	6.5
DC Current	I _{CC}	mA	—	38

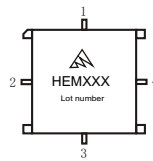
- 1) “*”f = 200MHz; “Δ” T_A = 24 ± 1°C;
- 2) The G_p and P-1 will be reduced 1dB and 3dB respectively under operating at 12VDC (I_{CC} = 32mA Typ).

Maximum Rating

DC Voltage : +17VDC
RF Input: +10dBm
Storage Temp: +125°C



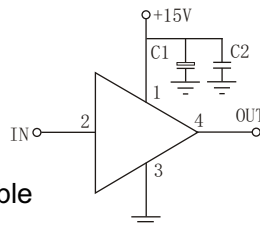
TO-8C



SMO-8C

Application Notes

1. Typical application shown as right, C₁ = 3.3~22 μF ; C₂ = 3300~6800pF;
2. See assembly section for mounting information
3. Connectorized package(SMA-1) available



Typical Curves

