



Features & Benefits

- STII* compatible bayonet coupling with locking nut feature
- Non-Optical Disconnect design (NOD)
- Low insertion loss:
 - < .34 dB typical MM
 - < .17 dB typical MM enhanced
 - < .15 dB typical SM
- Variety of ferrules
 - Pre-polished SM & MM ceramic PC
 - Stainless steel

Applications

- Telecommunications
- Local Area Networks (LAN's)
- Data processing networks
- Active device termination
- Premise installations
- Instrumentation

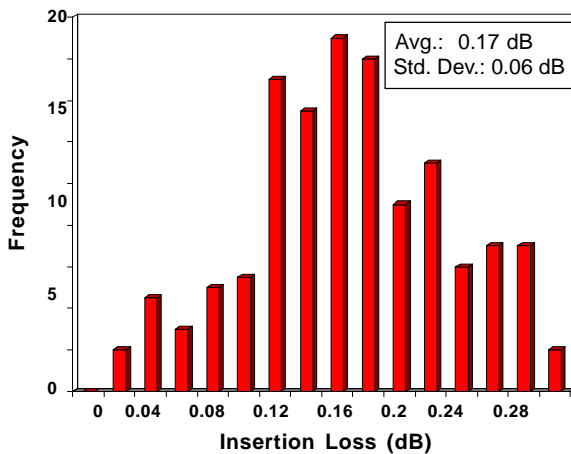
The Molex STII connector series offers a versatile coupling nut design which allows the STII connector to provide either standard ST* or non-optical disconnect terminations. This STII series of connectors is made of the latest engineering polymers and metals. The series utilizes pre-radiused and pre-polished ceramic ferrules which minimize the polishing time and provide a consistent ferrule end face geometry. Employing the Molex termination method and the pre-polished connectors, consistent and economical terminations are readily achieved.

Connector-to-connector mating is achieved by using the standard ST bulkhead feed-through adapters. These adapters combine a molded polymer or metal housing with either the extremely precise zirconia ceramic, the rugged phosphor bronze or the economical polymer alignment sleeve.

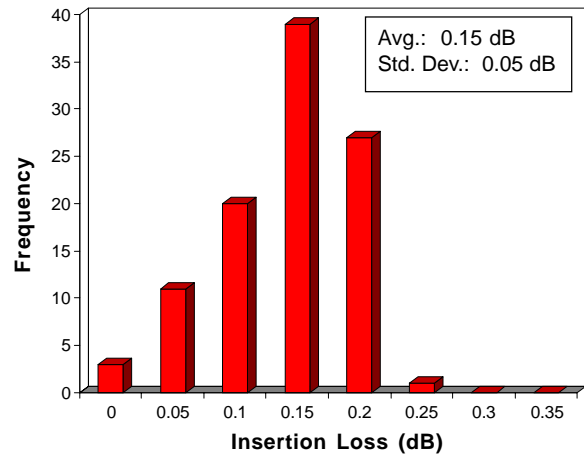
*STII and ST are trademarks of Lucent Technologies

Optical Performance Distribution

Insertion Loss Performance (MM Enhanced ferrule, 62.5/125µm fiber)



Insertion Loss Performance (SM ferrule, 9/125µm fiber)

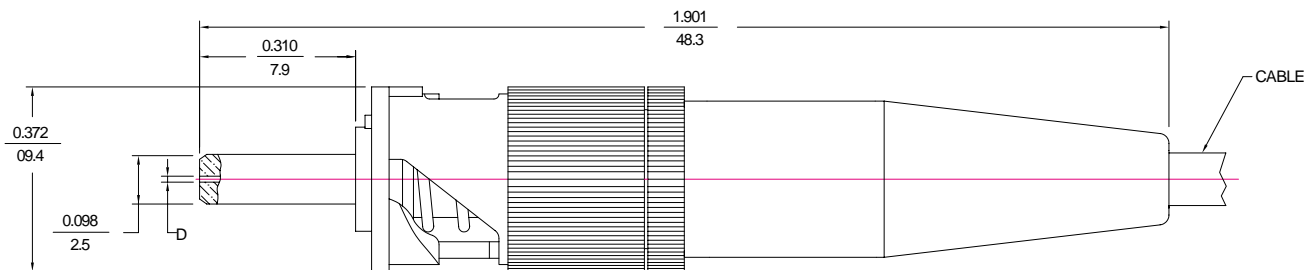


Performance and Specifications

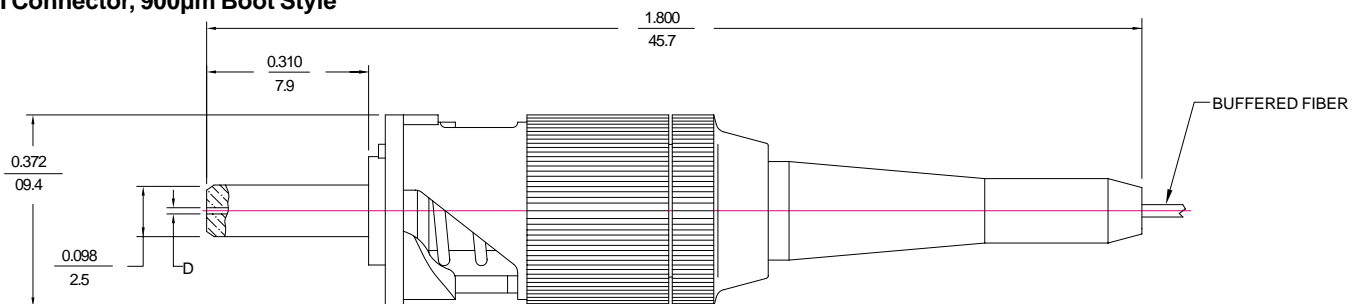
Characteristics	Units	Min.	Typ.	Max.	Comments
Durability	~dB	-	-	0.11	EIA/TIA - 455 - 21A, 200 cycles, clean every 25 cycles
Temperature Range:					
Storage	°C	-40	-	+80	May be further limited by cable specifications
Operating	°C	-40	-	+80	May be further limited by cable specifications
Thermal Aging	~dB	-	-	.04	EIA/TIA - 455 - 4A, 85°C 14 days
Temperature Cycling	~dB	-	-	.09	EIA/TIA - 455 - 3A, -40°C to +75°C, 42 cycles
Humidity Cycling	~dB	-	-	.06	EIA/TIA - 455 - 5A, 95% RH 60°C 14 days
Vibration	~dB	-	-	.02	EIA/TIA - 455 - 11A, 10 to 50 Hz, 2 hrs./axis
Flex Test	~dB	-	-	.02	Telcordia 326, 0.9 Kg, 100 cycles
Twist Test	~dB	-	-	.02	Telcordia 326, 1.35 Kg load
Proof Test	~dB	-	-	.02	Telcordia 326, 4.5 Kg. at 90°, 6.8 Kg at 0°
Straight Pull Test	~dB	-	-	.06	Telcordia 326, 4.5 Kg load
Side Pull Test	~dB	-	-	.33	Telcordia 326, 2.3 Kg load
Stability	~dB	-	-	.09	Telcordia 326, .45 Kg at 90°, 60°, 30° & 0°
Impact	~dB	-	-	.02	EIA/TIA - 455 - 2A, 1.5 M drop, 8 cycles

Mechanical Dimensions

STII Connector, 3.0mm Boot Style



STII Connector, 900µm Boot Style



All dimensions in $\frac{\text{INCHES}}{\text{mm}}$

Standard Part Numbers

Order Number	Description	Hole size "D"	Cable size
86013-0000	STII connector, MM, zirconia PC ⁺ ferrule, NOD [†] option	127μm	2.4mm and 3.0mm
86013-0100	STII connector, MM, zirconia PC ⁺ ferrule	127μm	2.4mm and 3.0mm
86013-0500	STII connector, MM, zirconia PC ⁺ ferrule, buffered fiber	127μm	900μm buffered fiber
86013-3000	STII connector, MM enhanced, zirconia PC ferrule, NOD option	128μm	2.4mm and 3.0mm
86013-3100	STII connector, MM enhanced, zirconia PC ferrule	128μm	2.4mm and 3.0mm
86013-3500	STII connector, MM enhanced, zirconia PC ferrule, buffered fiber	128μm	900μm buffered fiber
86013-4000	STII connector, SM, zirconia PC ferrule, NOD option	125μm	2.4mm and 3.0mm
86013-4100	STII connector, SM, zirconia PC ferrule	125μm	2.4mm and 3.0mm
86013-4500	STII connector, SM, zirconia PC ferrule, buffered fiber	125μm	900μm buffered fiber
86013-5000	STII connector, SM, zirconia PC ferrule, NOD option	126μm	2.4mm and 3.0mm
86013-5100	STII connector, SM, zirconia PC ferrule	126μm	2.4mm and 3.0mm
86013-5500	STII connector, SM, zirconia PC ferrule, buffered fiber	126μm	900μm buffered fiber
86013-7000	STII connector, SM, zirconia PC ferrule, NOD option	127μm	2.4mm and 3.0mm
86013-7100	STII connector, SM, zirconia PC ferrule	127μm	2.4mm and 3.0mm
86013-7500	STII connector, SM, zirconia PC ferrule, buffered fiber	127μm	900μm buffered fiber
86013-8000	STII connector, MM, stainless steel ferrule, NOD option	127μm	2.4mm and 3.0mm
86013-8100	STII connector, MM, stainless steel ferrule	127μm	2.4mm and 3.0mm
86013-8500	STII connector, MM, stainless steel ferrule, buffered fiber	127μm	900μm buffered fiber

†NOD = Non-Optical Disconnect, feature prevents ferrules from separating when force is applied to the cable