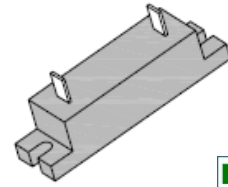


0.75A High Voltage Rectifier Assembly

Features

- Controlled avalanche characteristic combined with the ability to dissipate reverse power
- Typical IR less than 1µA
- Plastic package has Underwriters Laboratory Flammability Classification 94V-0
- Silver-plated copper terminals
- High temperature soldering guaranteed: 260° C/10 seconds, at terminals
- RoHS compliant



THV7



Mechanical Data

| | |
|-------------------|--|
| Case: | Reliable low cost construction utilizing, Molded plastic technique |
| Terminals: | Solderable per MIL-STD-202, Method 208 |
| Weight | 30 grams |

Maximum Ratings (*T Ambient=25°C unless noted otherwise*)

| Symbol | Description | THV 705 | THV 708 | THV 710 | THV 712 | THV 714 | THV 715 | THV 716 | Unit | Conditions |
|---------------|-------------------------------------|------------|---------|---------|---------|---------|---------|---------|------|---|
| VRRM | Max. Recurrent Peak Reverse Voltage | 5000 | 8000 | 10000 | 12000 | 14000 | 15000 | 16000 | V | |
| VRMS | Max. RMS Voltage | 5600 | 6300 | 7000 | 8400 | 9800 | 10500 | 11200 | V | |
| VDC | Max. DC Blocking Voltage | 5000 | 8000 | 10000 | 12000 | 14000 | 15000 | 16000 | V | |
| IF(AV) | Max. Average Rectified Current | 750 | | | | | | | mA | Tc=60°C |
| IFSM | Peak Forward Surge Current | 50 | | | | | | | A | 8.3 ms single half sine-wave superimposed on rated load |
| TOP | Operating Temperature Range | -20 to 135 | | | | | | | °C | |
| TSTG | Storage Temperature Range | -20 to 135 | | | | | | | °C | |

Electrical Characteristics (*T Ambient=25°C unless noted otherwise*)

| Symbol | Description | THV 705 | THV 708 | THV 710 | THV 712 | THV 714 | THV 715 | THV 716 | Unit | Conditions |
|-----------|---|---------|---------|---------|---------|---------|---------|---------|------|--------------|
| VF | Max. Instantaneous Forward Voltage | 8.0 | 8.0 | 10.0 | 14.0 | 14.0 | 14.0 | 16.0 | V | IF(AV)=750mA |
| IR | Maximum DC Reverse Current at Rated DC Blocking Voltage | 5.0 | | | | | | | µA | TA=25°C |

0.75A High Voltage Rectifier Assembly

THV705 - THV716

Note:

1. Ratings at 25 ° C ambient temperature unless other wise specified
2. Single Phase, half wave, 60 Hz, resistive or inductive load.
For capacitive load, derate current by 20%

Typical Characteristics Curves

Fig.1- Forward Current Derating Curve

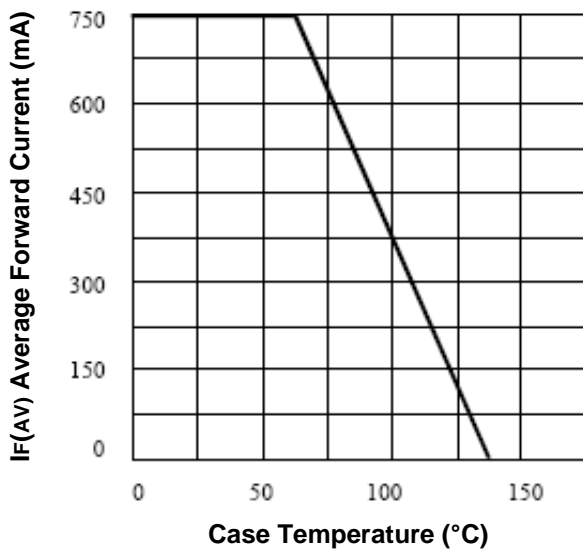


Fig.2- Peak Forward Surge Rating

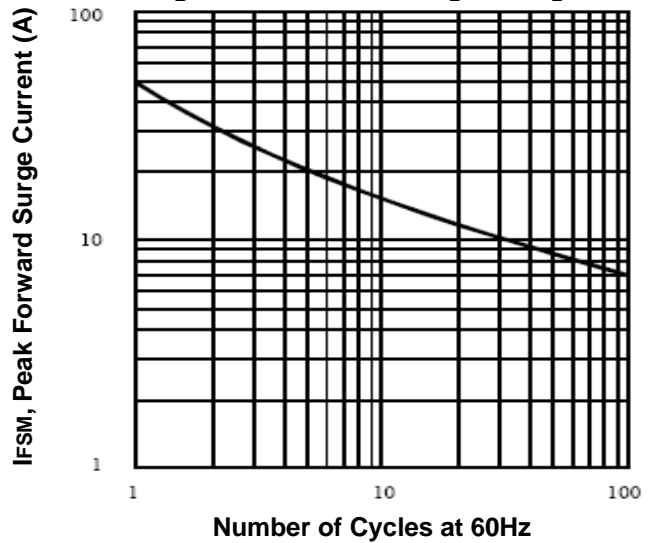


Fig.3- Typical Forward Characteristics

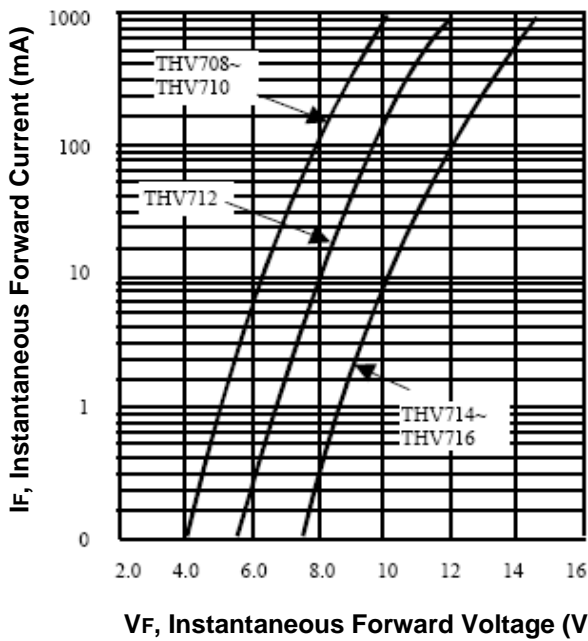
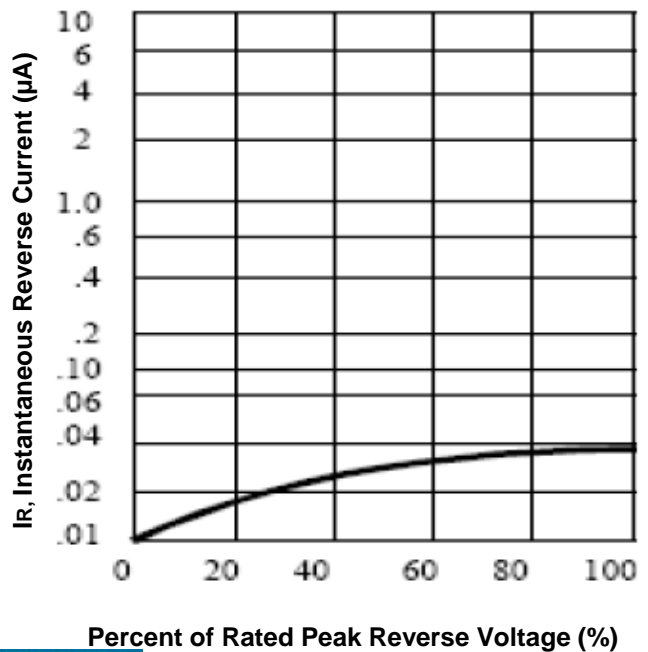


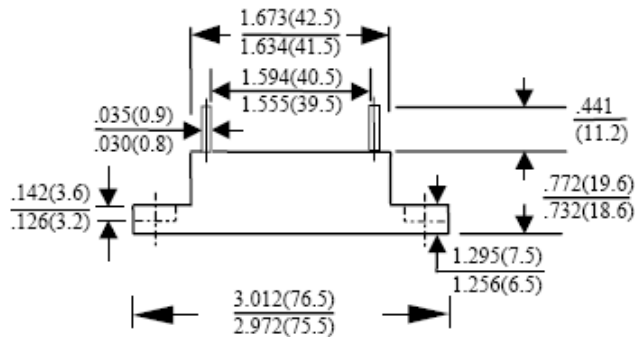
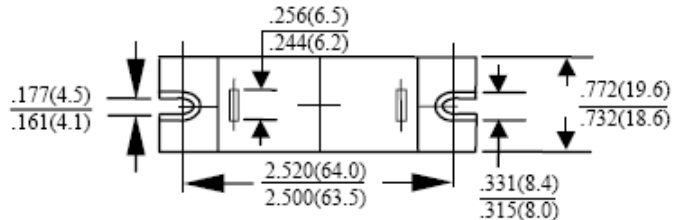
Fig.4- Typical Reverse Characteristics 25 ° C TA



0.75A High Voltage Rectifier Assembly

THV705 - THV716

Dimensions in inch (mm)



THV7

How to contact us:

US HEADQUARTERS

28040 WEST HARRISON PARKWAY, VALENCIA, CA 91355-4162

Tel: (800) TAITRON (800) 824-8766 (661) 257-6060

Fax: (800) TAITFAX (800) 824-8329 (661) 257-6415

Email: taitron@taitroncomponents.com

Http://www.taitroncomponents.com

TAITRON COMPONENTS MEXICO, S.A .DE C.V.

BOULEVARD CENTRAL 5000 INTERIOR 5 PARQUE INDUSTRIAL ATITALAQUIA, HIDALGO C.P.

42970 MEXICO

Tel: +52-55-5560-1519

Fax: +52-55-5560-2190

TAITRON COMPONENTS INCORPORATED REPRESENTAÇÕES DO BRASIL LTDA

RUA DOMINGOS DE MORAIS, 2777, 2.ANDAR, SALA 24 SAÚDE - SÃO PAULO-SP 04035-001 BRAZIL

Tel: +55-11-5574-7949

Fax: +55-11-5572-0052

TAITRON COMPONENTS INCORPORATED, SHANGHAI REPRESENTATIVE OFFICE

METROBANK PLAZA, 1160 WEST YAN' AN ROAD, SUITE 1503, SHANGHAI, 200052, CHINA

Tel: +86-21-5424-9942

Fax: +86-21-5424-9931