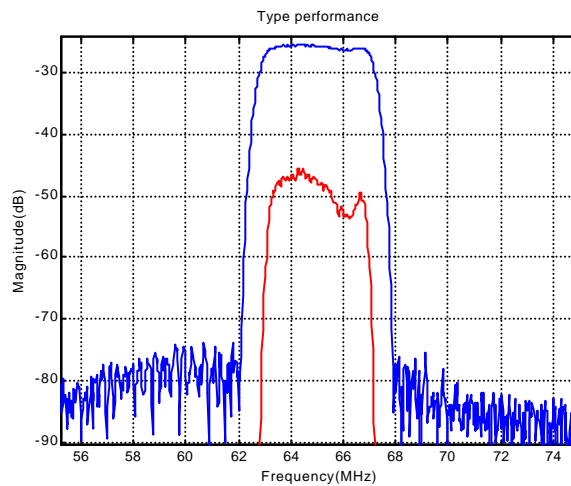


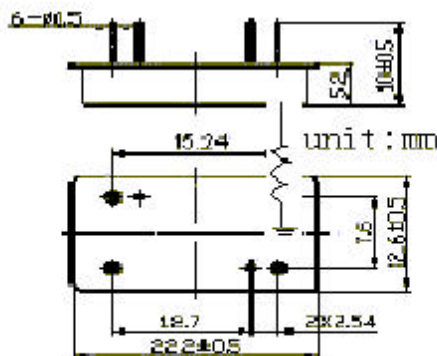


SP-LBT6503 SAW Filter Electrical Characteristic

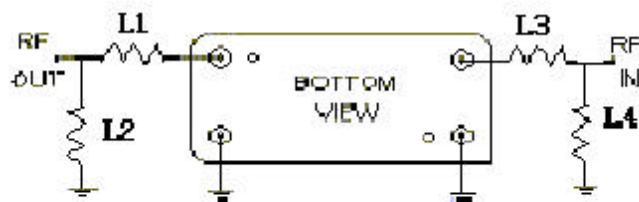
Parameter	Unit	Minimum	Typical	Maximum
Center Frequency	MHz	69.95	65	75.05
Insertion Loss	dB	-	25.30	27
3 dB Bandwidth	MHz	4.0	4.21	-
50 dB Bandwidth	MHz	-	5.76	5.9
Passband variation	dB	-	0.7	1.0
Absolute Delay	usec	-		
Ultimate Rejection	dB	45	50	-
Substrate Material		112-LiTaO ₃		
Ambient Temperature	° C	25		
Package Size		6/14 (22.1*12.7*5mm ³)		



SP-LBT6503 SAW Filter Electrical Characteristic



Package Outline



L1=101nH L2=56nH
L3=146nH L4=56nH

Source/Load Impedance=50ohm

Matching Configurata