

# SMB Termination

50Ω

DC to 6000 MHz

**ROSE-50+**  
**ROSE-50**



CASE STYLE: LL604

Connectors	Model	Price	Qty.
SMB-FEM	ROSE-50(+)	\$9.95 ea.	(1-9)

**+ RoHS compliant in accordance with EU Directive (2002/95/EC)**

*The +Suffix identifies RoHS Compliance. See our web site for RoHS Compliance methodologies and qualifications.*

## Maximum Ratings

Operating Temperature	-55°C to 100°C
Storage Temperature	-55°C to 100°C

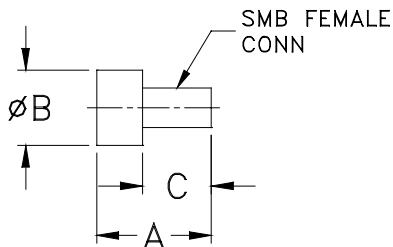
## Features

- SMB connector with female center contact
- wideband, DC to 6000 MHz
- rugged construction

## Applications

- cellular communications
- test set-up
- instrumentation
- PCS

## Outline Drawing



## Outline Dimensions (inch/mm)

A	B	D	wt
0.55	0.36	0.33	grams
13.97	9.14	8.38	4.0

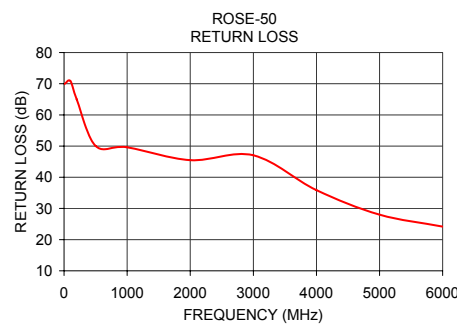
## Electrical Specifications

FREQUENCY (MHz)	IMPEDANCE (OHMS)	RETURN LOSS (dB) MIN.			POWER RATING* (W)
		DC-2 GHz	DC-4 GHz	DC-6 GHz	
DC-6000	50	30	23	20	0.50

\*At 70°C, derate linearly at 0.005W/°C to .35W at 100°C.

## Typical Performance Data

Frequency (MHz)	Return Loss (dB)
1.00	69.84
100.00	70.87
200.00	65.00
500.00	50.04
1000.00	49.61
2000.00	45.48
3000.00	47.04
4000.00	35.88
5000.00	28.01
6000.00	24.18



**Mini-Circuits®**  
ISO 9001 ISO 14001 CERTIFIED

ALL NEW  
minicircuits.com

P.O. Box 350166, Brooklyn, New York 11235-0003 (718) 934-4500 Fax (718) 332-4661 For detailed performance specs & shopping online see Mini-Circuits web site



The Design Engineers Search Engine Provides ACTUAL Data Instantly From MINI-CIRCUITS At: [www.minicircuits.com](http://www.minicircuits.com)

RF/IF MICROWAVE COMPONENTS

REV. C  
M98898  
ROSE-50  
RS/TD/CP/AM  
070305