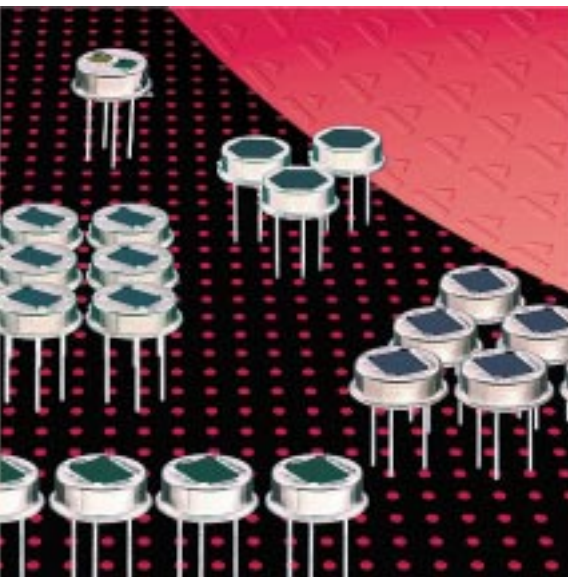


Pyroelectric Infrared Detectors

Dual Element Detector LHi 333



Dual Element Detector

Special Flat Pack Housing

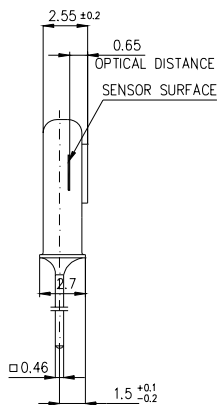
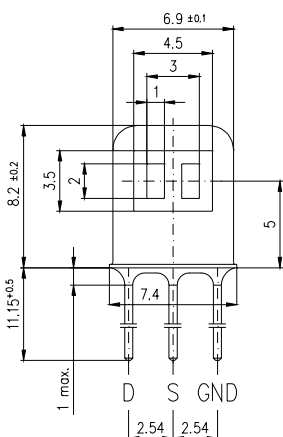
Designed for Multi-Sensor Arrangements

The **LHi 333** pyroelectric infrared-detector series is specially designed for Light switching applications with many detectors working in parallel for a wide field of view. It includes a dual element pyroelectric ceramic element with FET in source follower connection.

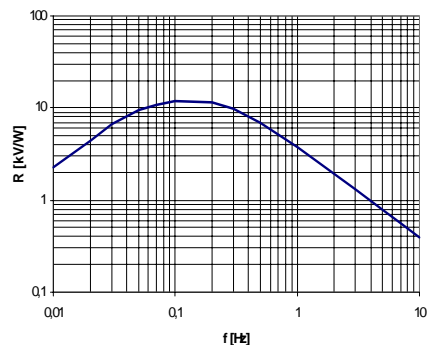
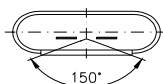
This detector is fit with an infrared filter 5...14 μm . It offers high responsivity with excellent common mode performance (match) and low noise.

Parameters	LHi 333			
	min	typical	max	units condition
Element size	2 x 1		mm^2	(2 elements)
Responsivity	3 300	3800	V/W	100°C, 1 Hz
Match	1	10	%	
Noise	20	50	μVpp	25°C, 0,3...10Hz
Offset Voltage	0,2	1,55	V	$R_s = 47\text{k}\Omega$, 25°C
NEP	$7,5 \times 10^{-10}$	28×10^{-10}	$\text{W} \sqrt{\text{Hz}}$	1Hz Bw, 100°C, 1 Hz
D*	5×10^7	19×10^7	$\text{cm} \sqrt{\text{Hz/W}}$	1Hz Bw, 100°C, 1 Hz
Output Impedance	5	10	$\text{k}\Omega$	$R_s = 47\text{k}\Omega$, 25°C
Operating Voltage	2	15	V	$R_s = 47\text{k}\Omega$, 25°C
Field of View, horizontal	100°		unobstructed	
vertical	100°		unobstructed	
Operating Temperature	40	75	°C	non permanent
Storage Temperature	-40	80	°C	non permanent

Field of View



Dimensions in mm



Frequency Response

Right for modification reserved / WS / 29.6.2001

Europe:
PerkinElmer Optoelectronics GmbH
 Wenzel Jaksch Str 31
 Wiesbaden / Germany
 Phone +49(0)611 492 0
 Fax +49(0)611 492 170

USA:
PerkinElmer Optoelectronics
 2175 Mission College Blvd
 Santa Clara, CA 95054
 Phone +408 565 0830
 Fax +408 565 0703

Asia:
PerkinElmer Optoelectronics
 47, Ayer Rajah Crescent #06-12
 Singapore 139947
 Phone +65 775 2022
 Fax +65 775 1008

