

30 GHz, 20 W CW, LIGHT WEIGHT, COMPACT, EFFICIENT**GENERAL DESCRIPTION**

MPM stands for Microwave Power Module and is the solution introduced by NEC for a microwave power source with high efficiency and the most compact size.

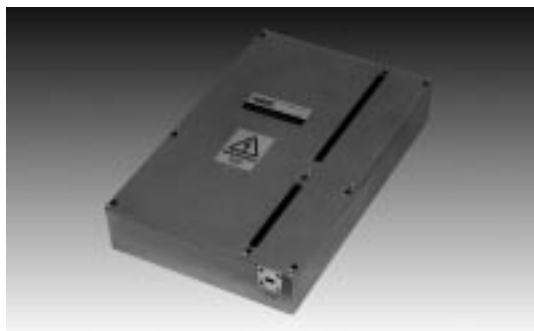
The MPM consists of a miniaturized traveling wave tube (TWT) and an electronic power conditioner (EPC). All the potential interface problems are taken care of by NEC and the user simply connects the MPM to his RF output and plugs in the DC supply.

LD79A02K is a complete integrated unit and can deliver an output power of 20 W over the range of 27.5 to 30.0 GHz with a gain of 40 dB.

The TWT of RF section in the LD79A02K has been designed and developed upon the NEC's advanced technology and enormous experience on a number of TWTs used in satellite ground terminals and terrestrial microwave links.

The very small and light weight EPC designed with sophisticated and experienced circuit technology ensures higher reliability, reduced maintenance costs and improved technical performance.

The LD79A02K is most suitable for a power amplifier in LMDS and Multimedia Satellite communication systems.

**FEATURES**

- Light weight, Compact, and Efficient

The TWT built in the MPM has a dual-depressed collector and is designed to operate at high efficiency across the power output range. The EPC features state-of-the-art techniques to optimize size and efficiency and the combination results in a unit significantly smaller and with less power consumption than a comparable solid state amplifier.

- Low Distortion

NEC has developed techniques for the correction of non-linear distortion of gain and phase generated in a TWT. As a result, the MPM has optimum performance across a broad power range and is ideally suited for multi-carrier transmission systems.

- Long Life

The TWT is designed to have a lifetime of 80,000 hours or more, which is comparable to that of a solid state amplifier in actual usage.

- Ideal for Digital Systems

A mini-arc in the electron gun have been eliminated in the TWT.

The information in this document is subject to change without notice.

TYPICAL OPERATIONS

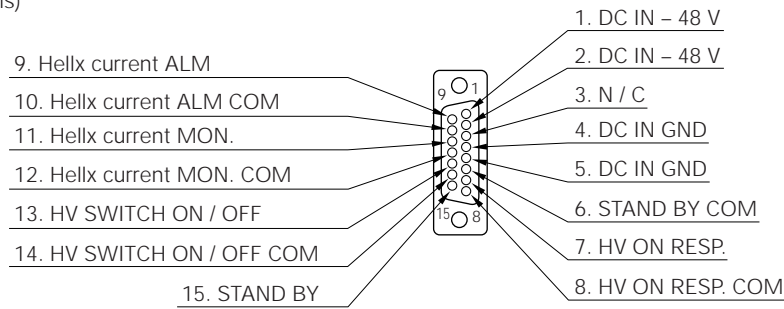
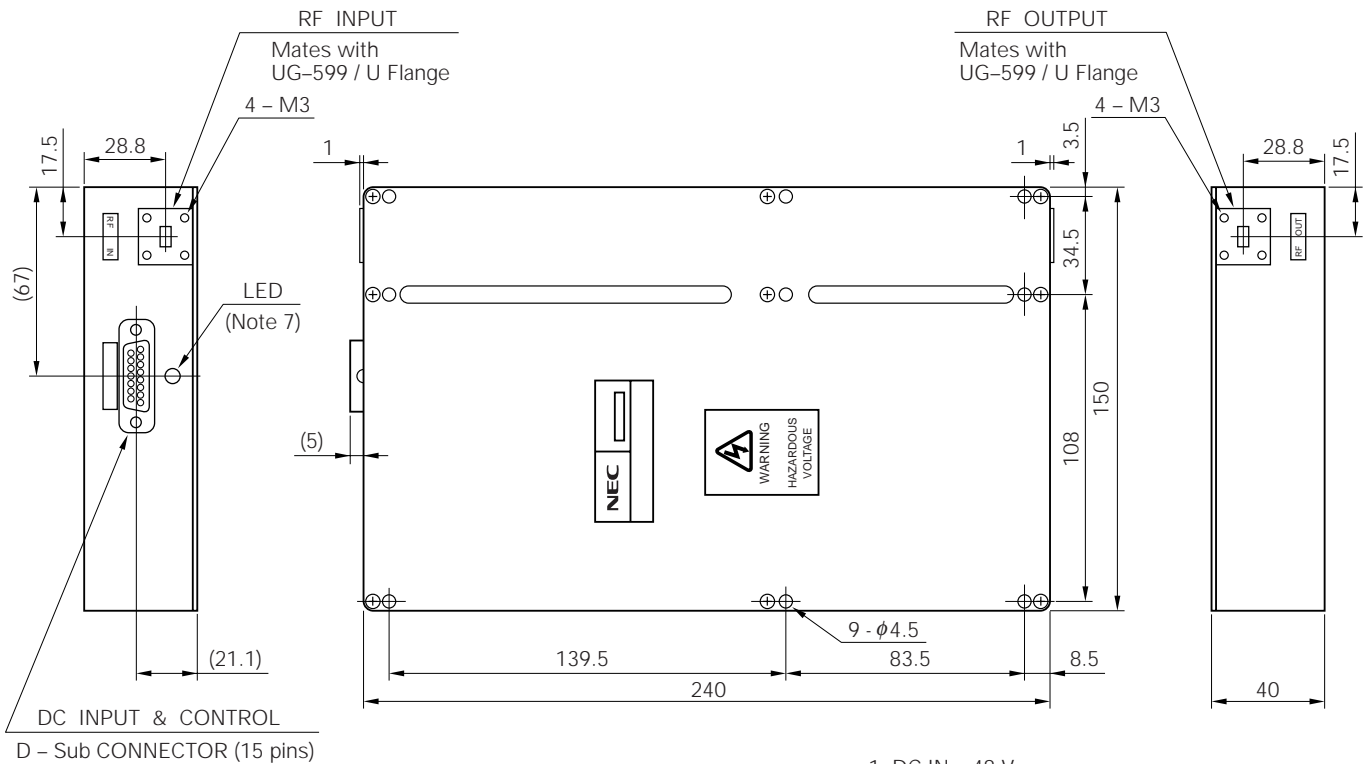
Frequency Range	27.5–30.0 GHz
Power Output	20 W minimum
Gain Variation	2.5 dB / 2.5 GHz
Gain	43 dB (at Po = 20 W) 50 dB (at small signal)
Gain Stability	±0.25 dB/24 hr (25°C±10°C)
Gain Slope	0.02 dB / MHz
Harmonic Output	15 dB below at rated output power
Spurious Output	-70 dBW in any 4 kHz band in the 27.5 to 30.0 GHz
AM to PM Conversion	4°/ dB at rated power
Intermodulation	30 dB below each of two equal carriers (total 2 W)
Group Delay	
Linear component	0.1 ns / MHz
Parabolic component	0.01 ns / MHz ²
Ripple component	1.0 ns (p-p) in any 40 MHz band
RF Input	
Waveguide	Mates with UG-599 / U Flange
VSWR	2.0 : 1 maximum
Load VSWR	Operate into 1.5 : 1 maximum
RF Output	
Waveguide	Mates with UG-599 / U Flange
VSWR	2.0 : 1 maximum
Load VSWR	Operate into 1.5 : 1 maximum
Primary Power	-48 V ± 10%
Power Consumption	86 W
Efficiency	25% approx.
Dimensions	240 × 150 × 40 mm
Weight	2.1 kg approx.

ENVIRONMENTAL CONDITIONS

- Ambient Temperature
-30°C to +70°C (non operating, storage)
- Relative Humidity
90% maximum (non dewing)
- Base Plate Temperature
-15°C to +65°C maximum

Note 1 : These characteristics and operating values may be changed as a result of additional information or product improvement. NEC should be consulted before using this information for equipment design. This data sheet should not be referred to a contractual specification.

LD79A02K OUTLINE (Unit in mm)



Pin Connection
(D-sub. 15 pins) (Note 1-6)

- Note 1.** DC IN -48 V : No.1 and No.2 are Connecting
DC IN GROUND : No.4 and No.5 are Connecting
- HV ON / OFF RESPONSE SIGNAL : Photocoupler Interface (No.7 : Collector, No.8 : Emitter)
HV ON : No.7 and No.8 conduct
 - Ihel ALM Signal : Photocoupler Interface (No.9 : Collector, No.10 : Emitter)
Ihel ALM Signal ON : No.9 and No.10 conduct.
 - Ihel Monitor (No.11, No.12) : 1 V/mA
 - HV ON : When No.13 and No.14 conduct, TWT will be ready to amplify.
 - STANDBY : After the heater warms up, No.6 and No.15 will conduct.
 - HV ON : LED (Red)

No part of this document may be copied or reproduced in any form or by any means without the prior written consent of NEC Corporation. NEC Corporation assumes no responsibility for any errors which may appear in this document.

NEC Corporation does not assume any liability for infringement of patents, copyrights or other intellectual property rights of third parties by or arising from use of a device described herein or any other liability arising from use of such device. No license, either express, implied or otherwise, is granted under any patents, copyrights or other intellectual property rights of NEC Corporation or others.

While NEC Corporation has been making continuous effort to enhance the reliability of its electronic components, the possibility of defects cannot be eliminated entirely. To minimize risks of damage or injury to persons or property arising from a defect in an NEC electronic component, customers must incorporate sufficient safety measures in its design, such as redundancy, fire-containment, and anti-failure features.

NEC devices are classified into the following three quality grades:

"Standard", "Special", and "Specific". The Specific quality grade applies only to devices developed based on a customer designated "quality assurance program" for a specific application. The recommended applications of a device depend on its quality grade, as indicated below. Customers must check the quality grade of each device before using it in a particular application.

Standard: Computers, office equipment, communications equipment, test and measurement equipment, audio and visual equipment, home electronic appliances, machine tools, personal electronic equipment and industrial robots

Special: Transportation equipment (automobiles, trains, ships, etc.), traffic control systems, anti-disaster systems, anti-crime systems, safety equipment and medical equipment (not specifically designed for life support)

Specific: Aircrafts, aerospace equipment, submersible repeaters, nuclear reactor control systems, life support systems or medical equipment for life support, etc.

The quality grade of NEC devices is "Standard" unless otherwise specified in NEC's Data Sheets or Data Books.

If customers intend to use NEC devices for applications other than those specified for Standard quality grade, they should contact an NEC sales representative in advance.

Anti-radioactive design is not implemented in this product.