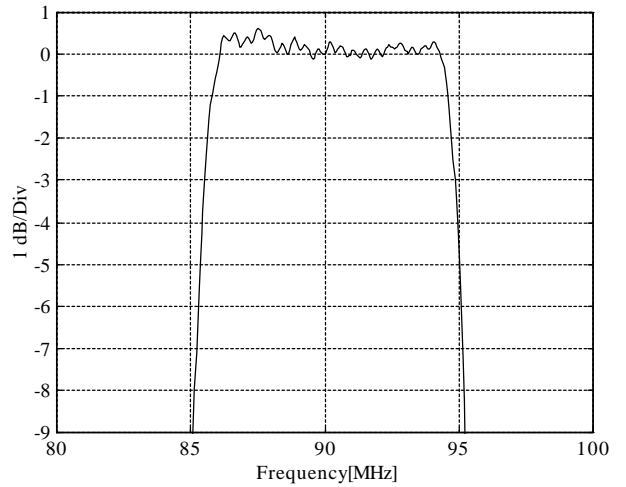
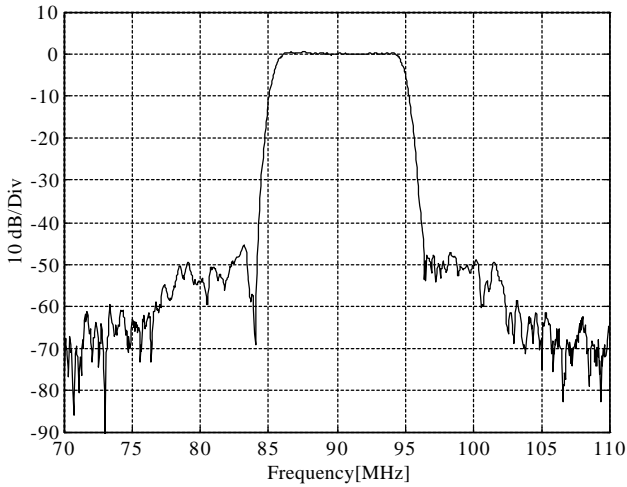
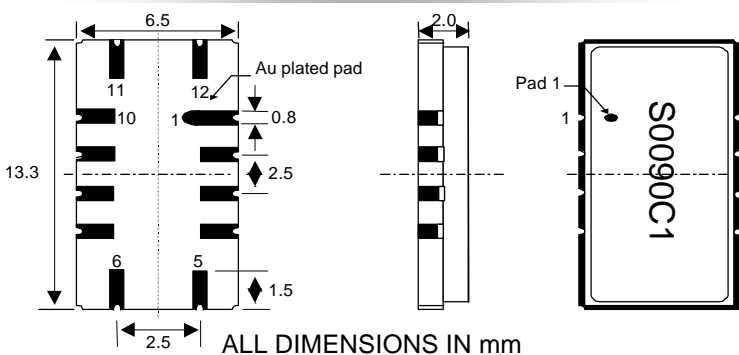


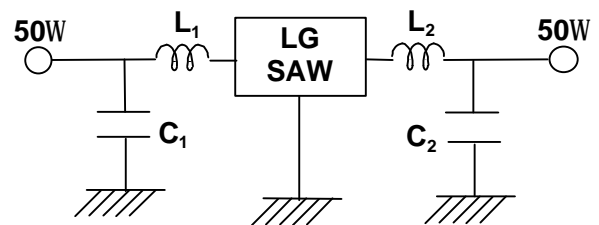
**Typical Performance**
**Frequency Response**

**Electrical Specification**

	Condition	Specification	Unit	Remarks
		LG (FS0090C1)		
Center Frequency		90	MHz	
Insertion Loss	$f_0$	18 max	dB	
Ripple	$f_0 \pm 3.5$ MHz	1 max	dB	
Bandwidth	1 dB	8.5 max	MHz	
Bandwidth	3 dB	9 mn	MHz	
Bandwidth	40 dB	12.3 max	MHz	
Group Delay	$f_0 \pm 3.5$ MHz	100 max	ns	
Phase Linearity	$f_0 \pm 3.5$ MHz	7 max	degree	

**Package**


ALL DIMENSIONS IN mm

 Input : 11    Output : 5  
 Input GND : 12    Output GND : 6  
 Case Ground : 1,2,3,4,7,8,9,10

**Matching Configuration**

**Contact Point**
**Seoul, Korea**  
**Domestic Sales**

 Tel) +82-2-2005-5264~8  
 Fax) + 82-2-2005-5252  
 E-mail : hdkim@lginnotek.com

**Overseas Sales**

 Tel) +82 2 2005-5226  
 Fax) +82 2 2005-5206~7  
 E-mail : ykleeb@lginnotek.com

**San Diego, USA**
**R&D, Marketing Office**

 Tel) 1-858-693-0101  
 Fax) 1-858-693-0091  
 E-mail : khbaek@lginfocomm.com