



POSEICO SPA  
Power SEmiconductors Italian COrporation

POSEICO SPA  
Via N. Lorenzi 8, 16152 Genova - ITALY  
Tel. ++ 39 010 6556234 - Fax ++ 39 010 6557519  
Sales Office:  
Tel. ++ 39 010 6556775 - Fax ++ 39 010 6442510

## RECTIFIER DIODE

# AR3008


Repetitive voltage up to **3000 V**  
Mean forward current **2700 A**  
Surge current **30.2 kA**

### FINAL SPECIFICATION

lug 02 - ISSUE : 06

Symbol	Characteristic	Conditions	T <sub>J</sub> [°C]	Value	Unit
<b>BLOCKING</b>					
V <sub>RRM</sub>	Repetitive peak reverse voltage		175	3000	V
V <sub>RSM</sub>	Non-repetitive peak reverse voltage		175	3100	V
I <sub>RRM</sub>	Repetitive peak reverse current	V=VRRM	175	75	mA
<b>CONDUCTING</b>					
I <sub>F(AV)</sub>	Mean forward current	180° sin ,50 Hz, Th=55°C, double side cooled		2700	A
I <sub>F(AV)</sub>	Mean forward current	180° sin ,50 Hz, Tc=85°C, double side cooled		2650	A
I <sub>FSM</sub>	Surge forward current	Sine wave, 10 ms without reverse voltage	175	30.2	kA
I <sup>2</sup> t	I <sup>2</sup> t			4560 x 1E3	A <sup>2</sup> s
V <sub>FM</sub>	Forward voltage	Forward current = 2900 A	25	1.30	V
V <sub>F(TO)</sub>	Threshold voltage		175	0.87	V
r <sub>F</sub>	Forward slope resistance		175	0.127	mohm
<b>SWITCHING</b>					
t <sub>rr</sub>	Reverse recovery time		175		μs
Q <sub>rr</sub>	Reverse recovery charge				μC
I <sub>rr</sub>	Peak reverse recovery current				A
<b>MOUNTING</b>					
R <sub>th(j-h)</sub>	Thermal impedance, DC	Junction to heatsink, double side cooled		26	°C/kW
R <sub>th(c-h)</sub>	Thermal impedance	Case to heatsink, double side cooled		6	°C/kW
T <sub>j</sub>	Operating junction temperature			-30 / 175	°C
F	Mounting force			18.0 / 20.0	kN
	Mass			500	g

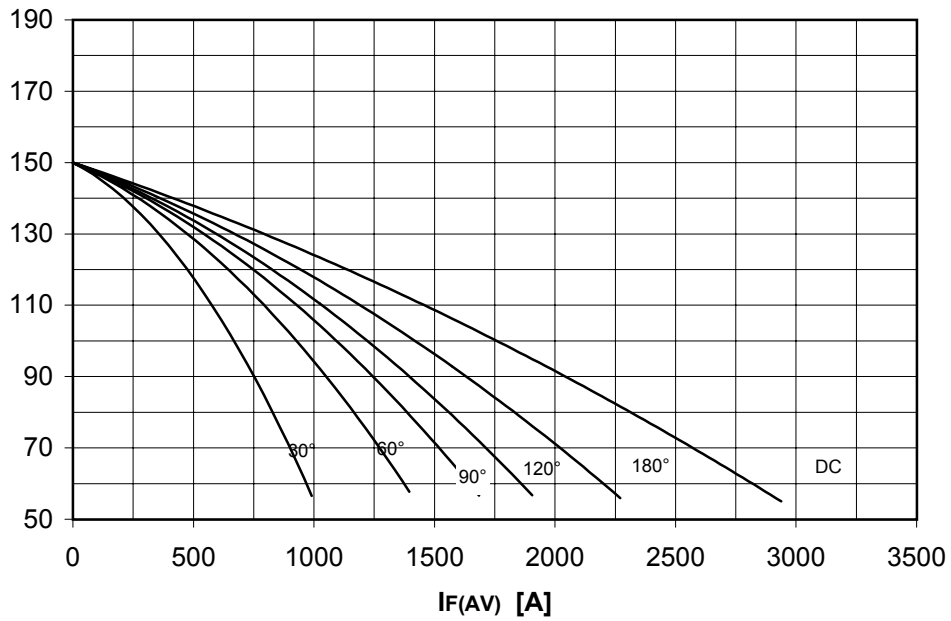
### ORDERING INFORMATION : AR3008 S 30

standard specification  VRRM/100

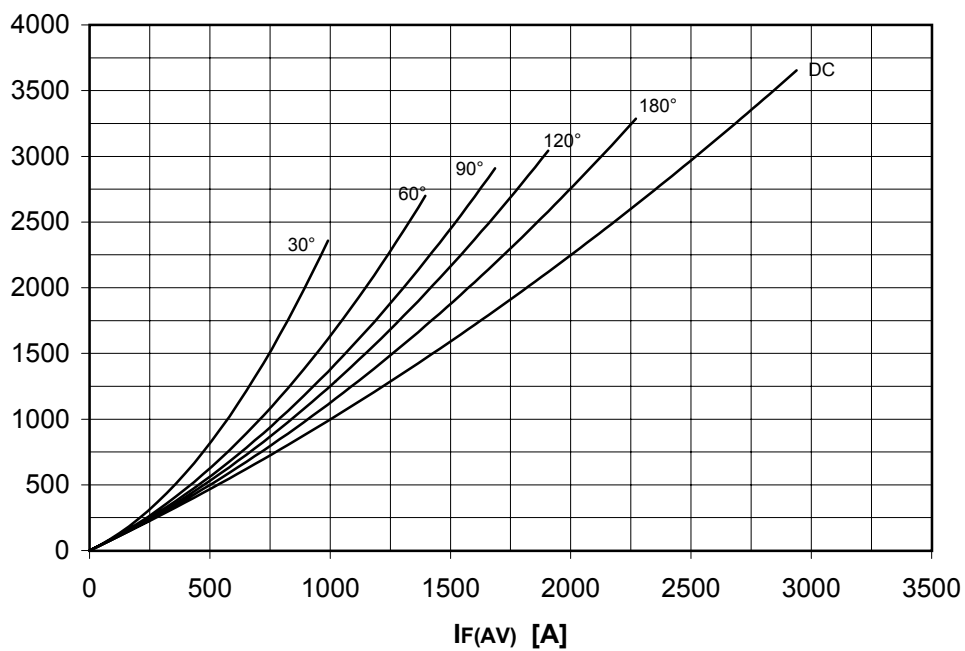
## DISSIPATION CHARACTERISTICS

### SQUARE WAVE

Th [°C]



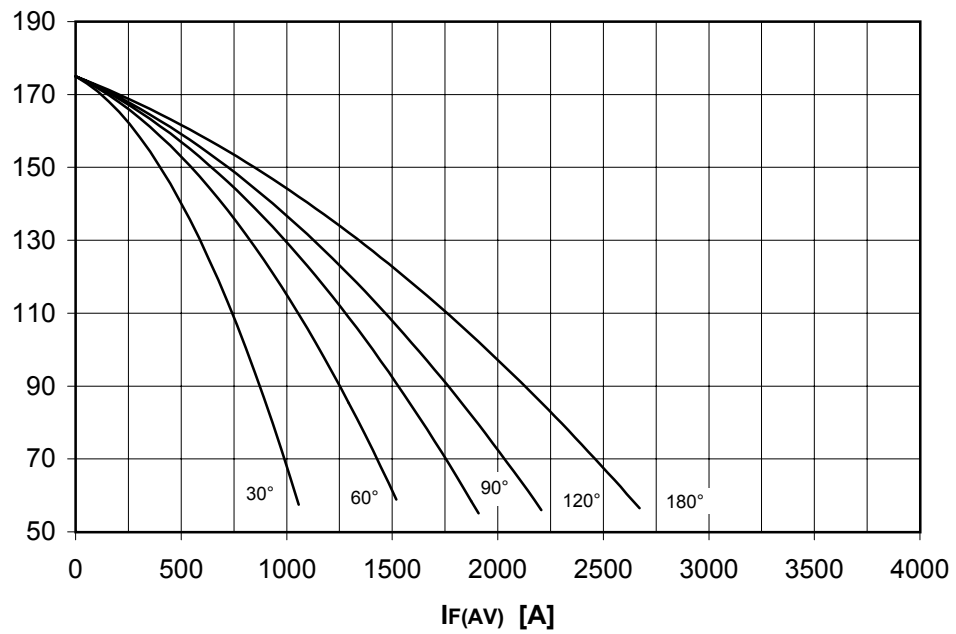
PF(AV) [W]



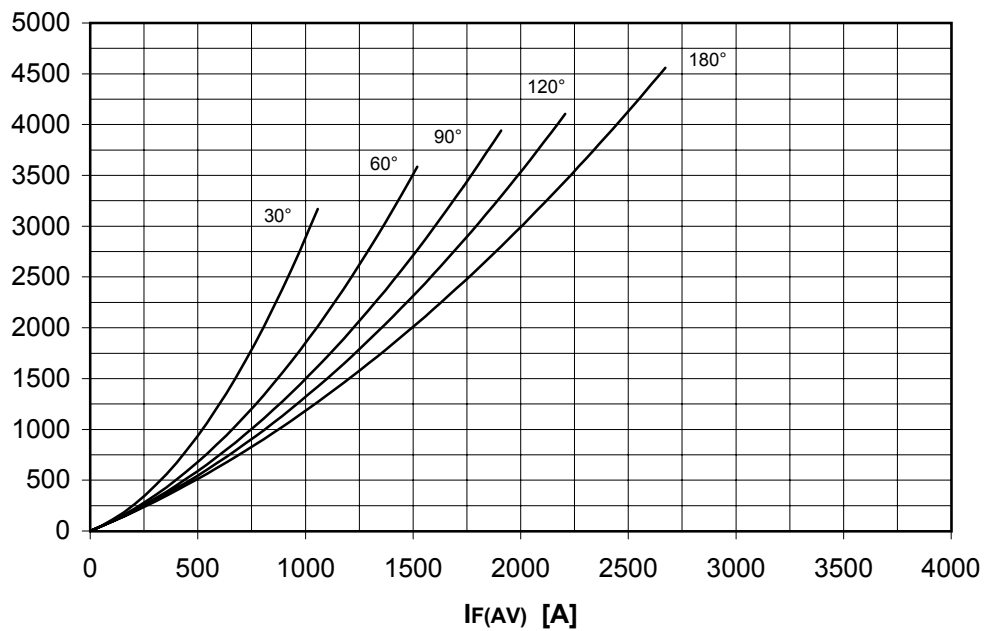
## DISSIPATION CHARACTERISTICS

SINE WAVE

Th [°C]



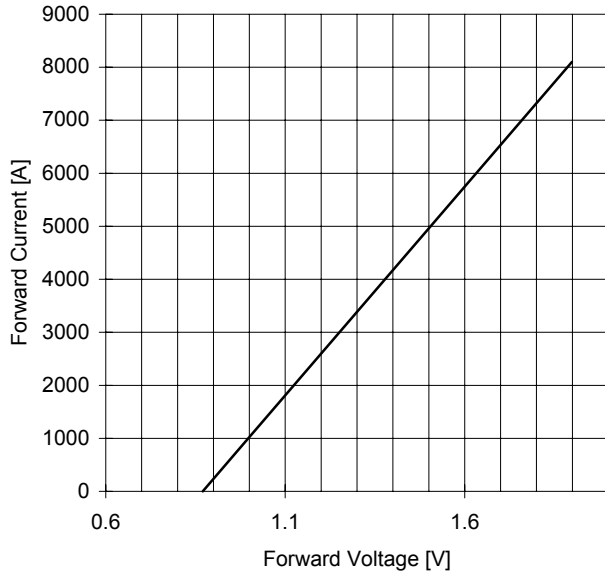
PF(AV) [W]



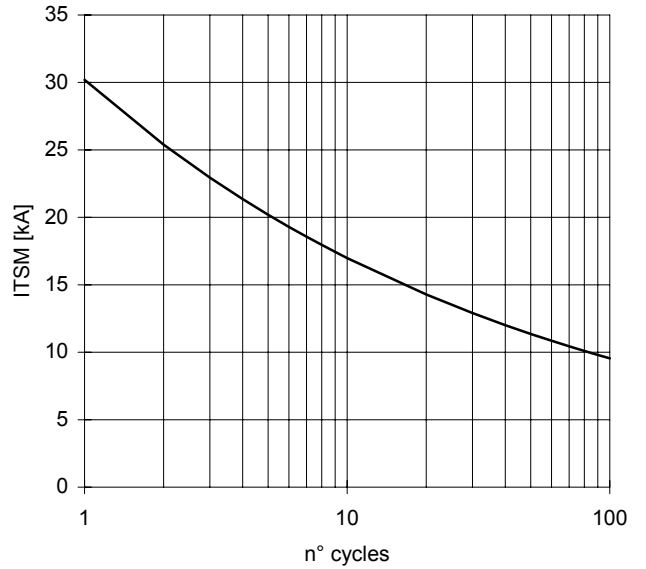
# AR3008 RECTIFIER DIODE

FINAL SPECIFICATION lug 02 - ISSUE : 06

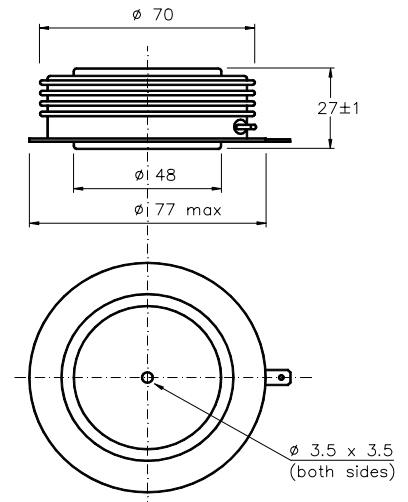
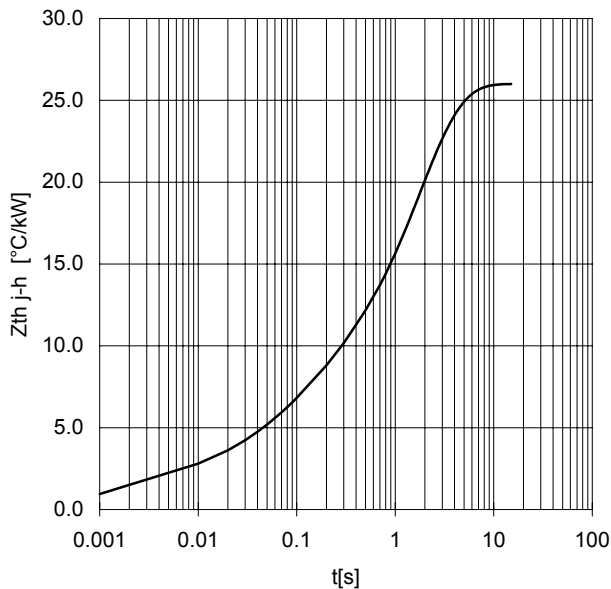
**FORWARD CHARACTERISTIC**  
T<sub>j</sub> = 175 °C



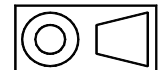
**SURGE CHARACTERISTIC**  
T<sub>j</sub> = 175 °C



**TRANSIENT THERMAL IMPEDANCE**  
DOUBLE SIDE COOLED



Dimensions  
in mm



All the characteristics given in this data sheet are guaranteed only with uniform clamping force, cleaned and lubricated heatsink, surfaces with flatness < .03 mm and roughness < 2 μm.

In the interest of product improvement POSEICO SPA reserves the right to change any data given in this data sheet at any time without previous notice.

If not stated otherwise the maximum value of ratings (symbols over shaded background) and characteristics is reported.

Distributed by

