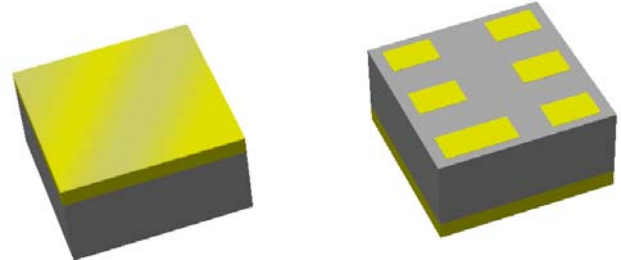


# Data Sheet

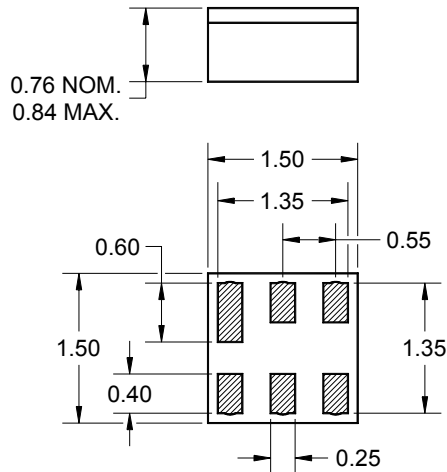
## Features

- For DCS applications
- Usable bandwidth of 75 MHz
- Compatible with leading chipset suppliers
- Ultra low loss
- Single-ended input, 50Ω
- Balanced output, 200Ω
- Chip Scale Package (CSP)
- Hermetic



## Package

Surface Mount 1.50 x 1.50 x 0.76 mm

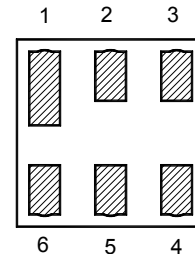


Dimensions shown are nominal in millimeters  
 All tolerances are  $\pm 0.10\text{mm}$

Body:  $\text{Al}_2\text{O}_3$  ceramic  
 Lid: Kovar or Alloy 42, Au over Ni plated  
 Terminations: Au plating 0.5 - 1.0 $\mu\text{m}$ ,  
 over a 2 - 6 $\mu\text{m}$  Ni plating

## Pin Configuration

Bottom View



Pin No.	Description
2	Input
6,4	Output
1,3,5	Case ground

# Data Sheet

## Electrical Specifications <sup>(1)</sup>

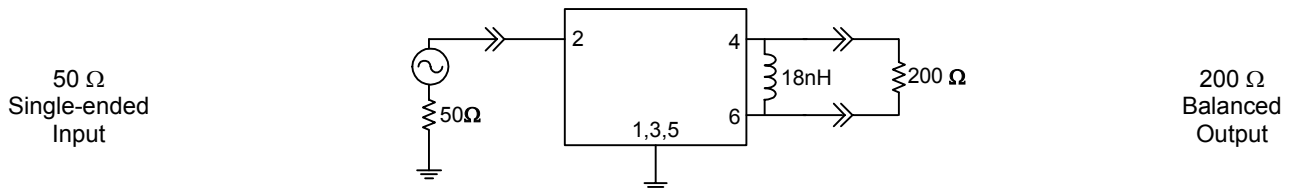
Operating Temperature Range: <sup>(2)</sup> +25 °C

Parameter <sup>(3)</sup>	Minimum	Typical	Maximum	Unit
<b>Center Frequency</b>	-	1842.5	-	MHz
<b>Maximum Insertion Loss</b> 1805 - 1880 MHz	-	1.5	2.0	dB
<b>Absolute Attenuation</b>				
100 - 1200 MHz	25	38	-	dB
1200 - 1705 MHz	25	33	-	dB
1705 - 1764 MHz	20	25	-	dB
1764 - 1785 MHz	9	12	-	dB
1920 - 1980 MHz	15	18	-	dB
1980 - 3000 MHz	20	26	-	dB
3000 - 5415 MHz	20	42	-	dB
5415 - 5640 MHz	41	45	-	dB
5640 - 6000 MHz	38	42	-	dB
<b>Output Amplitude Balance (<math> S_{31}/S_{21} </math>)</b> 1805 - 1880 MHz	-1.5	1.3	1.5	dB
<b>Output Phase Balance [<math>\Phi(S_{31}) - \Phi S_{21} + 180</math>]</b> 1805 - 1880 MHz	-10	2	10	degree
<b>Input/Output VSWR</b> 1805 - 1880 MHz	-	2.0	2.5	
<b>Source Impedance <sup>(4)</sup></b>	-	50	-	$\Omega$
<b>Load Impedance (Balanced) <sup>(4)</sup></b>	-	200  18nH	-	$\Omega$

### Notes:

1. All specifications are based on the test circuit shown below
2. In production, devices will be tested at room temperature to a guardbanded specification to ensure electrical compliance over temperature
3. Electrical margin has been built into the design to account for the variations due to temperature drift and manufacturing tolerances
4. This is the optimum impedance in order to achieve the performance shown

### Test Circuit:



# Data Sheet

## Electrical Specifications <sup>(1)</sup>

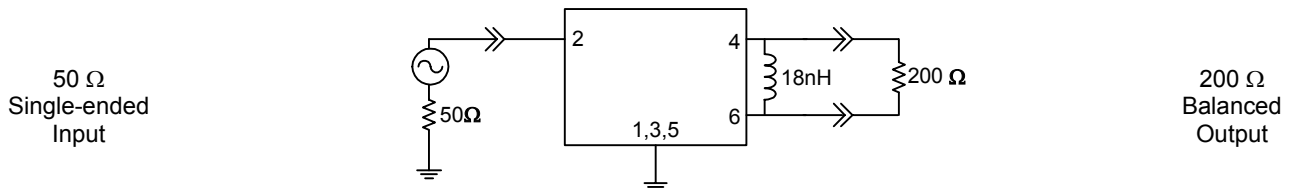
Operating Temperature Range: <sup>(2)</sup> -20 to +75 °C

Parameter <sup>(3)</sup>	Minimum	Typical	Maximum	Unit
<b>Center Frequency</b>	-	1842.5	-	MHz
<b>Maximum Insertion Loss</b> 1805 - 1880 MHz	-	1.5	2.3	dB
<b>Absolute Attenuation</b>				
100 - 1200 MHz	25	38	-	dB
1200 - 1705 MHz	25	33	-	dB
1705 - 1764 MHz	20	25	-	dB
1764 - 1785 MHz	6	12	-	dB
1920 - 1980 MHz	15	18	-	dB
1980 - 3000 MHz	20	26	-	dB
3000 - 5415 MHz	20	42	-	dB
5415 - 5640 MHz	41	45	-	dB
5640 - 6000 MHz	38	42	-	dB
<b>Output Amplitude Balance (<math> S_{31}/S_{21} </math>)</b> 1805 - 1880 MHz	-1.5	1.3	1.5	dB
<b>Output Phase Balance [<math>\Phi(S_{31}) - \Phi S_{21} + 180</math>]</b> 1805 - 1880 MHz	-10	2	10	degree
<b>Input/Output VSWR</b> 1805 - 1880 MHz	-	2.0	2.6	
<b>Source Impedance <sup>(4)</sup></b>	-	50	-	$\Omega$
<b>Load Impedance (Balanced) <sup>(4)</sup></b>	-	200  18nH	-	$\Omega$

### Notes:

1. All specifications are based on the test circuit shown below
2. In production, devices will be tested at room temperature to a guardbanded specification to ensure electrical compliance over temperature
3. Electrical margin has been built into the design to account for the variations due to temperature drift and manufacturing tolerances
4. This is the optimum impedance in order to achieve the performance shown

### Test Circuit:



# Data Sheet

## Electrical Specifications <sup>(1)</sup>

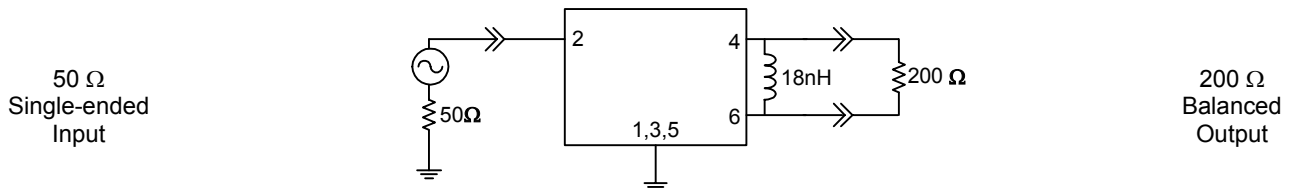
Operating Temperature Range: <sup>(2)</sup> -25 to +80 °C

Parameter <sup>(3)</sup>	Minimum	Typical	Maximum	Unit
<b>Center Frequency</b>	-	1842.5	-	MHz
<b>Maximum Insertion Loss</b> 1805 - 1880 MHz	-	1.5	2.4	dB
<b>Absolute Attenuation</b>				
100 - 1200 MHz	25	38	-	dB
1200 - 1705 MHz	25	33	-	dB
1705 - 1764 MHz	20	25	-	dB
1764 - 1785 MHz	6	12	-	dB
1920 - 1980 MHz	15	18	-	dB
1980 - 3000 MHz	20	26	-	dB
3000 - 5415 MHz	20	42	-	dB
5415 - 5640 MHz	41	45	-	dB
5640 - 6000 MHz	38	42	-	dB
<b>Output Amplitude Balance ( S<sub>31</sub>/S<sub>21</sub> )</b> 1805 - 1880 MHz	-1.5	1.3	1.5	dB
<b>Output Phase Balance [Φ(S<sub>31</sub>)-ΦS<sub>21</sub>+180]</b> 1805 - 1880 MHz	-10	2	10	degree
<b>Input/Output VSWR</b> 1805 - 1880 MHz	-	2.0	2.8	
<b>Source Impedance <sup>(4)</sup></b>	-	50	-	Ω
<b>Load Impedance (Balanced) <sup>(4)</sup></b>	-	200  18nH	-	Ω

### Notes:

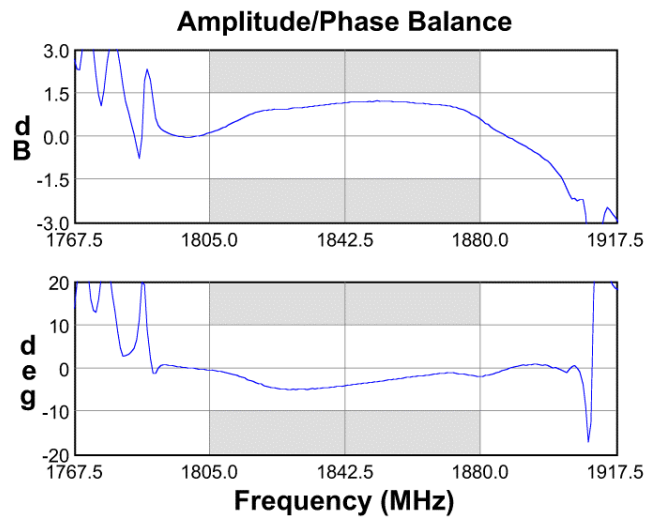
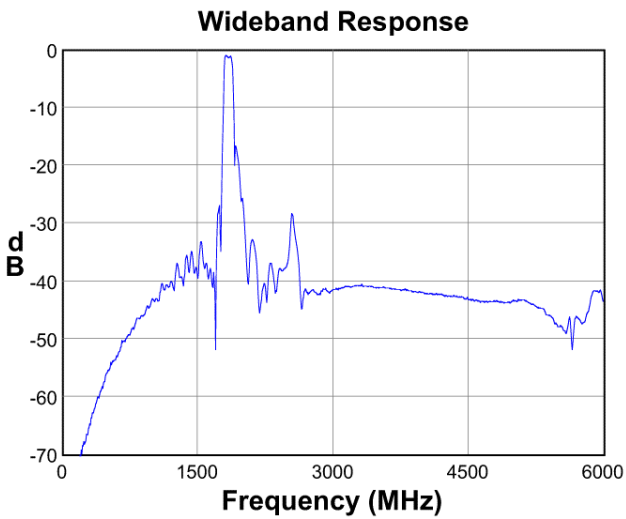
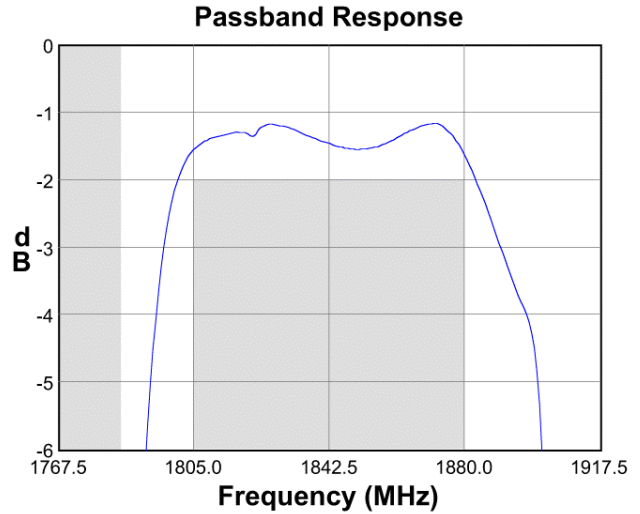
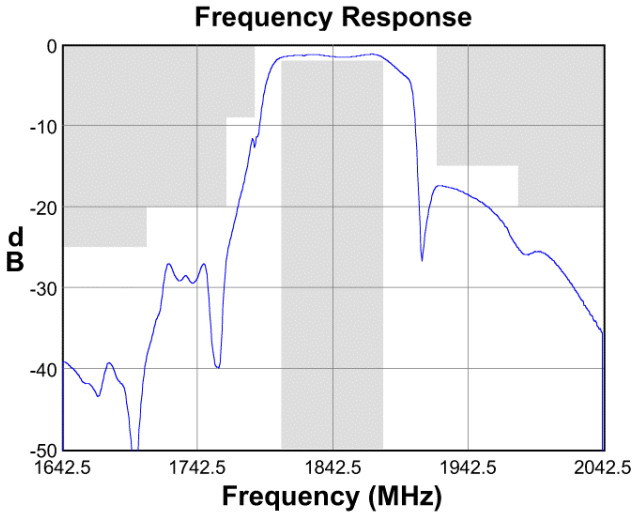
1. All specifications are based on the test circuit shown below
2. In production, devices will be tested at room temperature to a guardbanded specification to ensure electrical compliance over temperature
3. Electrical margin has been built into the design to account for the variations due to temperature drift and manufacturing tolerances
4. This is the optimum impedance in order to achieve the performance shown

### Test Circuit:

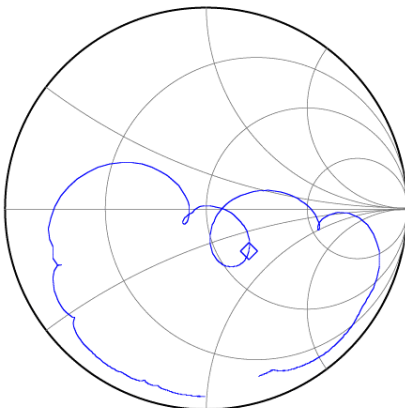


**Data Sheet**

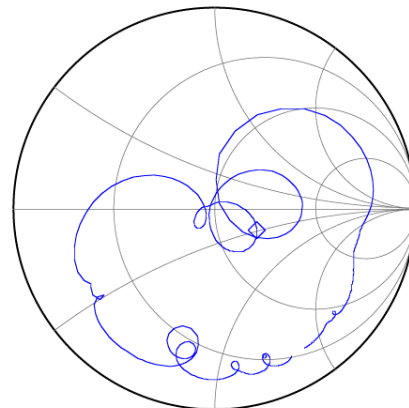
**Typical Performance (at +25°C)**



**Input Smith Chart**

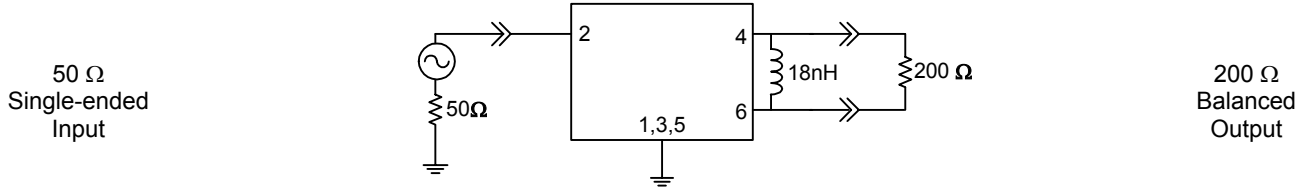


**Output Smith Chart**

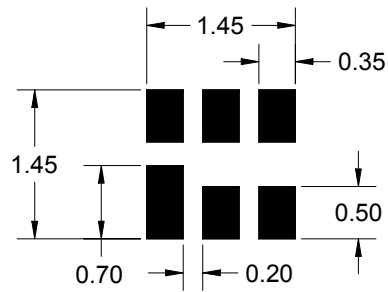
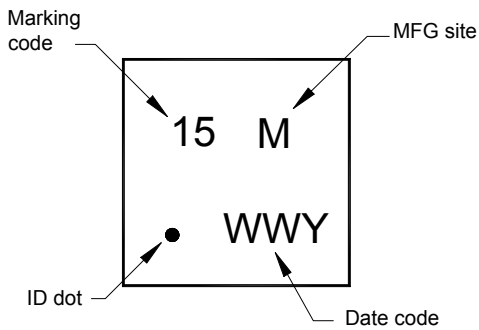


**Data Sheet**

**Matching Schematics**



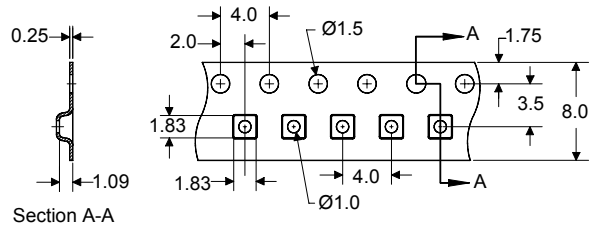
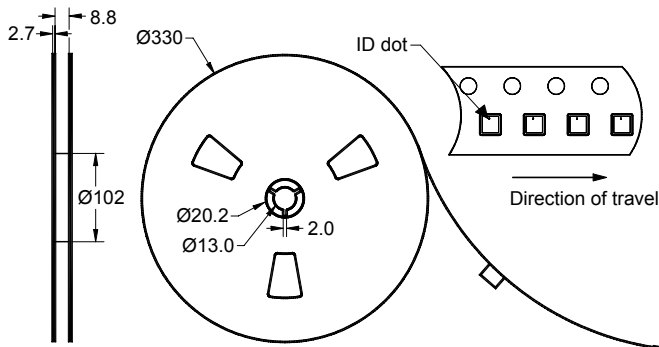
**Marking PCB Footprint**



The date code consists of: WW = 2 digit week, Y = last digit of year, M = manufacturing site code

This footprint represents a recommendation only  
Dimensions shown are nominal in millimeters

**Tape and Reel**




Dimensions shown are nominal in millimeters  
Packaging quantity: 10000 units/reel

# Data Sheet

## Maximum Ratings

Parameter	Symbol	Minimum	Maximum	Unit
Operating Temperature Range	T	-25	+80	°C
Storage Temperature Range	T <sub>stg</sub>	-40	+85	°C

### Warnings

- Electrostatic Sensitive Device (ESD) 
- Avoid ultrasonic exposure

### Material Content

- Does not contain lead (Pb) or other RoHS restricted materials

## Links to Additional Technical Information

[PCB Layout Tips](#)

[Qualification Flowchart](#)

[Soldering Profile](#)

[S-Parameters](#)

[Other Technical Information](#)

Sawtek's liability is limited only to the Surface Acoustic Wave (SAW) component(s) described in this data sheet. Sawtek does not accept any liability for applications, processes, circuits or assemblies, which are implemented using any Sawtek component described in this data sheet.

## Contact Information



PO Box 609501  
 Orlando, FL 32860-9501  
 USA

Phone: +1 (407) 886-8860  
 Fax: +1 (407) 886-7061  
 Email: [custservice@sawtek.com](mailto:custservice@sawtek.com)  
 Web: [www.sawtek.com](http://www.sawtek.com)

Or contact one of our worldwide  
 Network of [sales offices](#),  
[Representatives or distributors](#)