

LIFO/FIFO Buffer Register

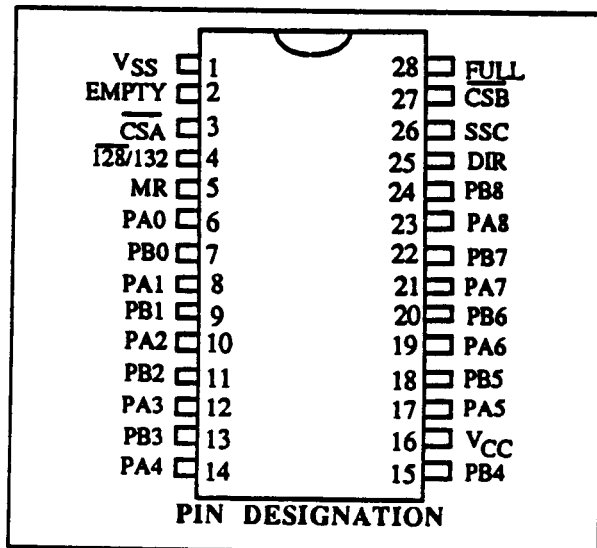
WD1510-00,-01,-02

FEATURES

- Word length selectable: 128 or 132
- 9 bit word width
- DC to 650 KHz (-00), 1 MHz (-01), 1.5 MHz (-02)
- Empty and full flags
- Three-state data lines
- 5-volt only
- No external clocks required
- TTL compatible on all inputs and outputs
- 28 pin plastic or ceramic dip
- Cascadable with WD1511 support chip
- Fully asynchronous dual port operation

DESCRIPTION

The WD1510 is an MOS/LSI Memory Buffer which is organized as a 9-bit by 128 or 132 word stack. The chip has 2 bidirectional data ports and may be read from or written into either port. Thus, the chip can function as a LIFO from either port or it can function as a FIFO, with data flow from either port A to port B or vice versa. The DIRECTION input pin is used to specify the data flow direction. The WD1510 is fabricated in 5-volt only N-channel technology.



OPERATION

The WD1510 contains a 132 x 9 buffer which may be programmed for 128 x 9 operation. Setting the 128/132 pin to a Logic 0, enables the EMPTY and FULL lines to be activated when 128 bytes are read or written. When the 128/132 line is set to a Logic 1 or left open, the 132 byte operation is enabled. This line contains an internal pull-up resistor of approximately 5KΩ.

When the Master Reset Line (pin 5) is set to a Logic 1, all internal counters are reset and the EMPTY Flag is set. Prior to reading or writing data, the DIRECTION Line (pin 25) must be set to select the desired operation:

DIR	PORT A	PORT B
1	WRITE	READ
0	READ	WRITE

To operate the device in the FIFO mode, both Ports must be used. If the DIRECTION Line is set to a logic 1, then data is written into Port A and read out of Port B. Reading/Writing to the two ports can be done asynchronously.

In the LIFO mode only one port is used. For example, if using Port A, the DIRECTION Line is set to a Logic 1 to enter data, and is reset to a Logic 0 to read data.

Reading or writing is performed by setting the appropriate CS (Chip Select) Line to a Logic 0. After the specified hold time has expired, data may be entered or read on the rising edge of CSA or CSB. In a Read mode, data is valid as long a CS remains active. Both Ports return to the high impedance state when CS is returned to a Logic 1.

The EMPTY Line (Pin 2) and the FULL Line (Pin 28) are used as status or interrupt lines to determine the status of the buffer. When both EMPTY and FULL are at a Logic 0, the buffer contains 1 thru 127 bytes (128/132 = 0) or 1 thru 132 bytes (128/132 = 1).

WESTERN DIGITAL

LIFO/FIFO Buffer Register

ELECTRICAL CHARACTERISTICS

ABSOLUTE MAXIMUM RATINGS

V_{CC} with respect to V_{SS} (Ground)+7V
 Max Voltage on any Pin with respect to V_{SS} -0.5V to +7V
 Operating Temperature 0°C to 70°C

Storage Temperature

Plastic-55° C to +125° C
 Ceramic-65° C to +150° C

OPERATING CHARACTERISTICS (DC)

$T_A = 0^\circ\text{C TO } 70^\circ\text{C}$, $V_{SS} = 0\text{V}$, $V_{CC} = +5\text{V} \pm 0.25\text{V}$

SYMBOL	CHARACTERISTIC	MIN	TYP	MAX	UNITS	CONDITIONS
I_{LI}	Input Leakage			10	μA	$V_{IN} = V_{CC}$
I_{LO}	Output Leakage			10	μA	$V_{OUT} = V_{CC}, V_{SS}$
V_{IH}	Input High Voltage	2.2			V	
V_{IL}	Input Low Voltage			0.8	V	
V_{OH}	Output High Voltage	2.4			V	$I_O = -100 \mu\text{A}$
V_{OL}	Output Low Voltage			.4	V	$I_O = 1.6\text{mA}$
I_{CC}	Power Supply Current		125	200	mA	All outputs open

A.C. TIMING CHARACTERISTICS

$T_A = 0^\circ\text{C to } 70^\circ\text{C}$, $V_{SS} = 0\text{V}$, $V_{CC} = +5\text{V} \pm 0.25\text{V}$, $V_{OH} = 2.0\text{V}$, $V_{OL} = 0.8\text{V}$.

SYMBOL	CHARACTERISTICS	WD1510-00*		WD1510-01*		WD1510-02*	
		MIN	MAX	MIN	MAX	MIN	MAX
T_{MR}	Master Reset Time	400		250		250	
T_{DV}	Data Valid from CS		550		350		300
T_{DD}	Data Delay from CS		110		85		60
T_{DH}	Data Hold from CS	150		100		80	
T_{DIR}	DIR Setup Time	1500		1000		834	
T_{EV}	EMPTY Valid from CS		550		350		250
T_{FV}	FULL Valid from CS		550		350		250
T_{CSL}	CS Pulse Width Low	600		500		417	
T_{CSH}	CS Pulse Width High	600		500		417	
T_{CY}	CS Cycle Time	1540		1000		834	
T_{DS}	Data Setup Time	80		50		50	
F_{MAX}	Data Transfer Rate		.65		1.0		1.5

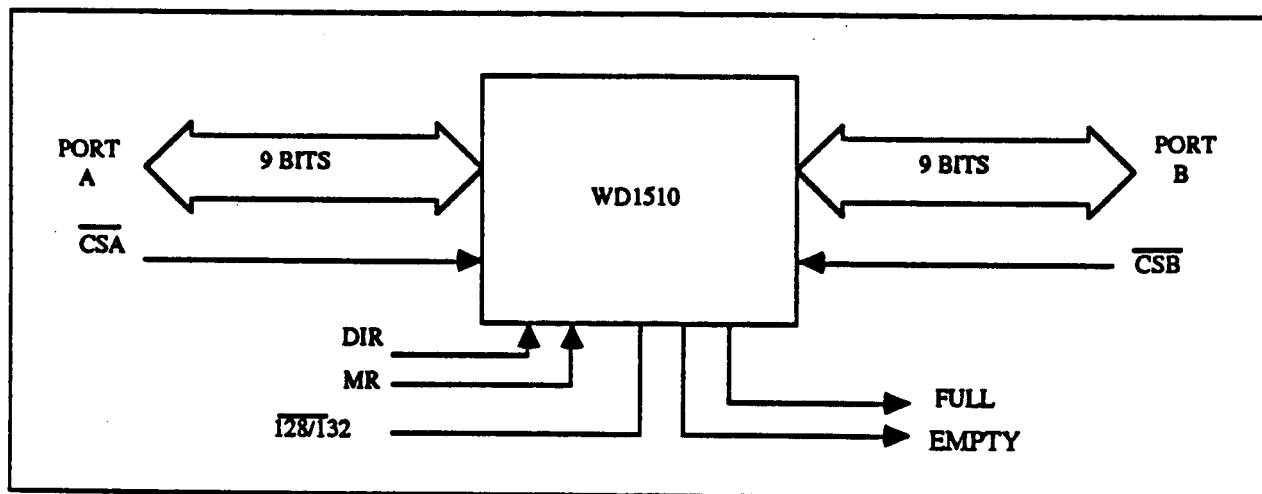
*All values are in nanoseconds with the exception of F_{MAX} -MHz.

WESTERN DIGITAL

LIFO/FIFO Buffer Register

PIN DESCRIPTION

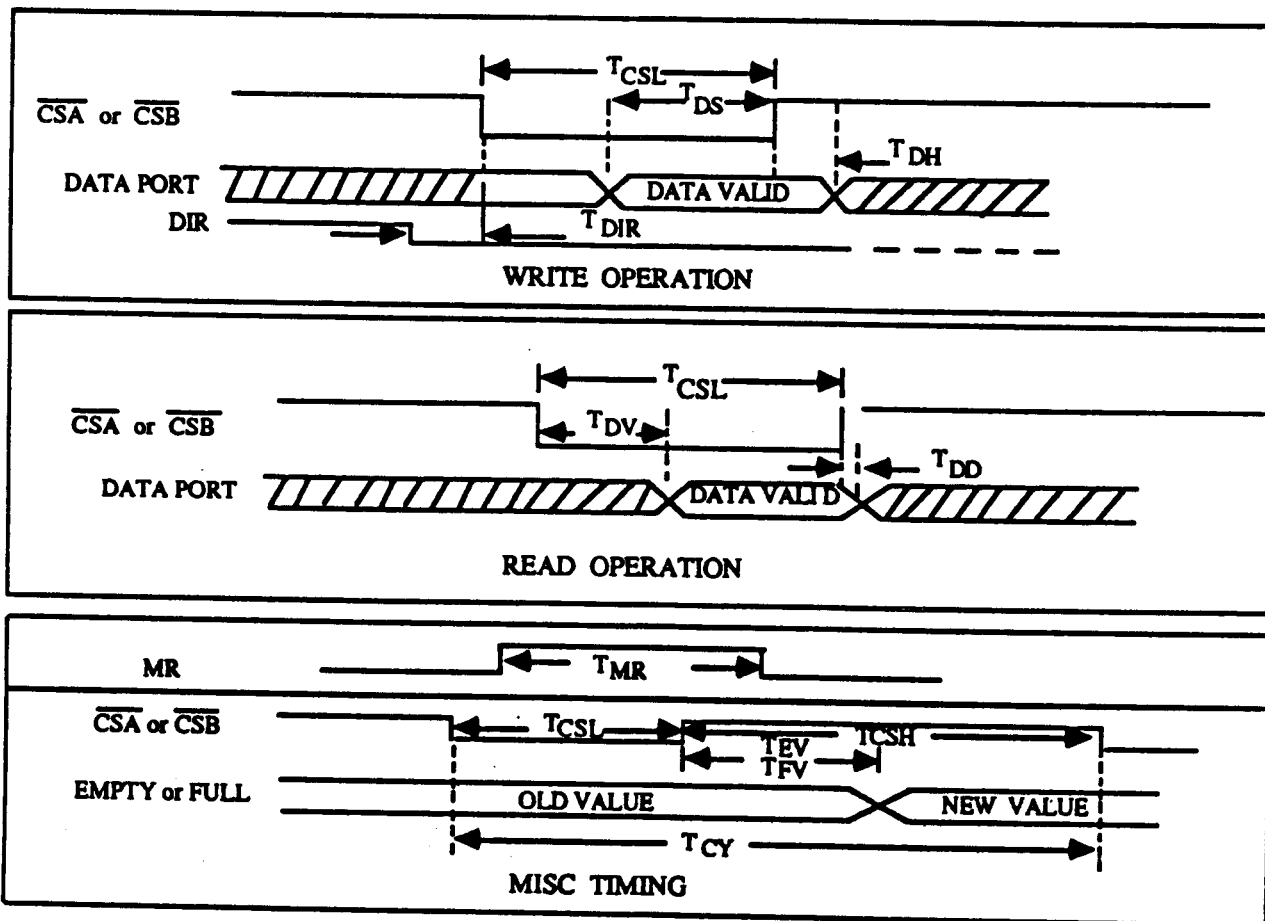
PIN NUMBER	NAME	SYMBOL	FUNCTION
1	VSS	VSS	Ground
2	EMPTY	EMPTY	Indicates when there is no data in the buffer
3	CHIP SELECT PORT A	$\overline{\text{CSA}}$	Used to select Port A for either a Read or Write operation
4	128 OR 132	$\overline{\text{128/132}}$	Used to set word length. When low word length = 128, when high word length = 132
5	MASTER RESET	MR	When pulsed will clear the buffer and set the EMPTY pin
6,8,10,12,14,17,19,21,23	PORT A DATA LINES	PAO-BA8	Bidirectional DATA Port for reading or writing
7,9,11,13,15,18,20,22,24	PORT B DATA LINES	PBO-PB8	Bidirectional DATA Port for reading or writing
16	V _{CC}	V _{CC}	+5 volts \pm .25V
25	DIRECTION	DIR	When low DIR specifies that Port A may be read from and Port B may be written into. When high DIR specifies that Port A may be written into and Port B may be read from.
26	NO CONNECTION	NC	No connection (not for customer use).
27	CHIP SELECT PORT B	$\overline{\text{CSB}}$	Used to select Port B for either a Read or Write Operation
28	FULL	FULL	Indicates that all 132 or 128 words of memory are loaded with data



BLOCK DIAGRAM

WESTERN DIGITAL

LIFO/FIFO Buffer Register



CAPACITANCE
 $T_A=25^\circ\text{C}; V_{CC}=\text{GND}=0\text{V}$

SYMBOL	PARAMETER	MIN	TYP	MAX	UNIT	TEST CONDITIONS
C_{IN}	Input Capacitance		6	10	pF	$f_C = 1 \text{ MHz}$ Unmeasured pins returned to GND. $V_{CC} = 5.0\text{V}$
$C_{I/O}$	I/O Capacitance		15	20	pF	
C_L	Load Capacitance		50		pF	

WD1510 CAPACITANCE LEVELS

Information furnished by Western Digital Corporation is believed to be accurate and reliable. However, no responsibility is assumed by Western Digital Corporation for its use; nor for any infringements of patent or other rights of third parties which may result from its use. No license is granted by implication or otherwise under any patent rights of Western Digital Corporation. Western Digital Corporation reserves the right to change specifications at any time without notice.

Western Digital
 2445 McCabe Way
 Irvine, California 92714
 FAX (714)660-4909 Telex 910-595-1139

For information on WD Communications Products
 Call: 1-800-NET LEADER (1-800-638-5323) or (714)474-2033
 General Information-Ext. 4629 Technical Support-Ext. 4900
 C110757

WESTERN DIGITAL