



KE SERIES HIGH PERFORMANCE IEC CONNECTOR FILTERS



INTRODUCTIONS

1. Specially designed with ground choke providing most effective EMI suppression for high frequency noise (ranged 5MHz-25MHz).
2. Bleeder resistor can be added with suffix "-R" on part numbers.
3. With optional 3300pF Y capacitor instead of 2200pF.
4. With optional 0.1uF X capacitor instead of 0.047uF.
5. With optional solder lug connection instead of fast on terminal.
6. All part numbers are UL recognized, CSA certified and VDE approved.

COMPONENTS

PART NO.	L (mH)	Cx (uF)	Cy (pF)	Lg (uH)
03KEEG3DA/03KEEW3DA	3.1	0.047	2200	100
*08KEEG3DA/08KEEW3DA	0.8			
**10KEEG3DA/10KEEW3DA	0.4			

** UL, CSA & VDE approved to 9A 115/250VAC
 * VDE approved to 6A 250V

MINIMUM INSERTION LOSS IN dB

COMMON MODE (L-G) IN 50 OHM SYSTEM						
CURRENT RATING	FREQUENCY-MHz					
	.15	.50	1.0	5.0	10	30
3A	20	30	35	45	45	45
8A	10	15	45	40	40	50
10A	2	10	15	20	35	40
DIFFERENTIAL MODE (L-L) IN 50 OHM SYSTEM						
3A	0	8	12	45	45	45
8A	0	5	12	40	40	40
10A	0	3	10	35	35	40

MECHANICAL CONSTRUCTION



G3D

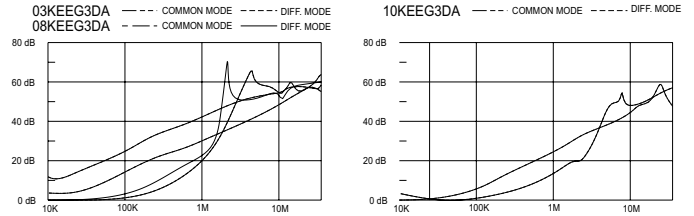


W3D

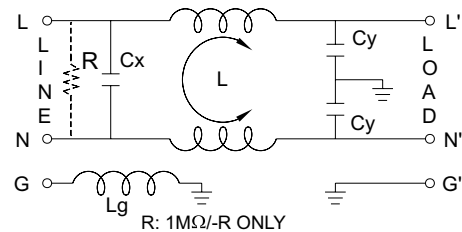
SPECIFICATIONS

1. Maximum leakage current each line-to-ground @ 115VAC 60Hz: 0.20mA @ 250VAC 50Hz: 0.40mA
2. Hipot rating (one minute) line-to-ground: 2250VDC line-to-line: 1450VDC
3. Operating frequency: 50/60Hz
4. Rated voltage: 115/250VAC

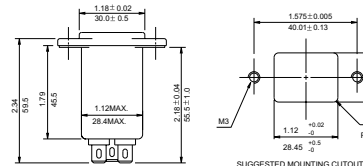
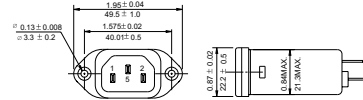
INSERTION LOSS (TYPICAL)



ELECTRICAL SCHEMATIC

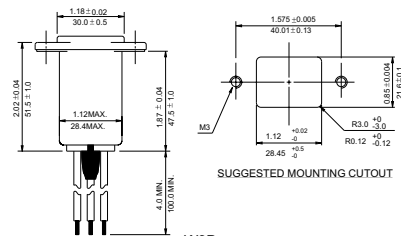
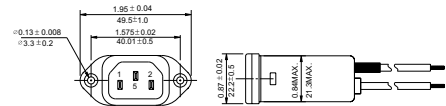


R: 1MΩ/-R ONLY



SUGGESTED MOUNTING CUTOUT

G3D



SUGGESTED MOUNTING CUTOUT

W3D

ALL WIRE LEADS 4.0" LONG MIN.

UNIT: INCH mm