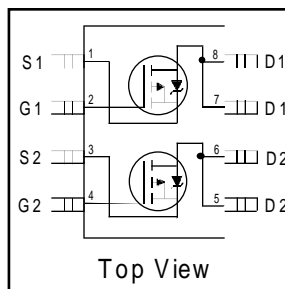


- Generation V Technology
- Ultra Low On-Resistance
- Dual P-Channel MOSFET
- Very Small SOIC Package
- Low Profile (<1.1mm)
- Available in Tape & Reel
- Fast Switching



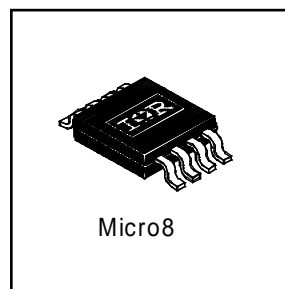
$$V_{DSS} = -20V$$

$$R_{DS(on)} = 0.27\Omega$$

Description

Fifth Generation HEXFETs from International Rectifier utilize advanced processing techniques to achieve extremely low on-resistance per silicon area. This benefit, combined with the fast switching speed and ruggedized device design that HEXFET Power MOSFETs are well known for, provides the designer with an extremely efficient and reliable device for use in a wide variety of applications.

The new Micro8 package, with half the footprint area of the standard SO-8, provides the smallest footprint available in an SOIC outline. This makes the Micro8 an ideal device for applications where printed circuit board space is at a premium. The low profile (<1.1mm) of the Micro8 will allow it to fit easily into extremely thin application environments such as portable electronics and PCMCIA cards.



Absolute Maximum Ratings

| | Parameter | Max. | Units |
|----------------------------------|--|--------------|-------|
| I_D @ $T_A = 25^\circ\text{C}$ | Continuous Drain Current, V_{GS} @ -4.5V | -1.7 | A |
| I_D @ $T_A = 70^\circ\text{C}$ | Continuous Drain Current, V_{GS} @ -4.5V | -1.4 | |
| I_{DM} | Pulsed Drain Current ① | -9.6 | |
| P_D @ $T_A = 25^\circ\text{C}$ | Power Dissipation | 1.25 | W |
| | Linear Derating Factor | 10 | mW/°C |
| V_{GS} | Gate-to-Source Voltage | ± 12 | V |
| dv/dt | Peak Diode Recovery dv/dt ② | -5.0 | V/ns |
| T_J, T_{STG} | Junction and Storage Temperature Range | -55 to + 150 | °C |

Thermal Resistance

| | Parameter | Typ. | Max. | Units |
|-----------------|------------------------------|------|------|-------|
| $R_{\theta JA}$ | Maximum Junction-to-Ambient④ | — | 100 | °C/W |

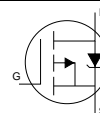
All Micro8 Data Sheets reflect improved Thermal Resistance, Power and Current -Handling Ratings- effective only for product marked with Date Code 505 or later .

Electrical Characteristics @ $T_J = 25^\circ\text{C}$ (unless otherwise specified)

| | Parameter | Min. | Typ. | Max. | Units | Conditions |
|---------------------------------|--------------------------------------|-------|--------|------|---------------------|---|
| $V_{(BR)DSS}$ | Drain-to-Source Breakdown Voltage | -20 | — | — | V | $V_{GS} = 0V, I_D = -250\mu A$ |
| $\Delta V_{(BR)DSS}/\Delta T_J$ | Breakdown Voltage Temp. Coefficient | — | -0.012 | — | V/ $^\circ\text{C}$ | Reference to $25^\circ\text{C}, I_D = -1\text{mA}$ |
| $R_{DS(ON)}$ | Static Drain-to-Source On-Resistance | — | — | 0.27 | Ω | $V_{GS} = -4.5V, I_D = -1.2A$ ③ |
| | | — | — | 0.40 | | $V_{GS} = -2.7V, I_D = -0.60A$ ③ |
| $V_{GS(th)}$ | Gate Threshold Voltage | -0.70 | — | — | V | $V_{DS} = V_{GS}, I_D = -250\mu A$ |
| g_{fs} | Forward Transconductance | 1.3 | — | — | S | $V_{DS} = -10V, I_D = -0.60A$ |
| I_{DSS} | Drain-to-Source Leakage Current | — | — | -1.0 | μA | $V_{DS} = -16V, V_{GS} = 0V$ |
| | | — | — | -25 | | $V_{DS} = -16V, V_{GS} = 0V, T_J = 125^\circ\text{C}$ |
| I_{GSS} | Gate-to-Source Forward Leakage | — | — | -100 | nA | $V_{GS} = -12V$ |
| | Gate-to-Source Reverse Leakage | — | — | 100 | | $V_{GS} = +12V$ |
| Q_g | Total Gate Charge | — | 5.4 | 8.2 | nC | $I_D = -1.2A$ |
| Q_{gs} | Gate-to-Source Charge | — | 0.96 | 1.4 | | $V_{DS} = -16V$ |
| Q_{gd} | Gate-to-Drain ("Miller") Charge | — | 2.4 | 3.6 | | $V_{GS} = -4.5V$, See Fig. 6 and 9 ③ |
| $t_{d(on)}$ | Turn-On Delay Time | — | 9.1 | — | ns | $V_{DD} = -10V$ |
| t_r | Rise Time | — | 35 | — | | $I_D = -1.2A$ |
| $t_{d(off)}$ | Turn-Off Delay Time | — | 38 | — | | $R_G = 6.0\Omega$ |
| t_f | Fall Time | — | 43 | — | | $R_D = 8.3\Omega$, See Fig. 10 ③ |
| C_{iss} | Input Capacitance | — | 240 | — | pF | $V_{GS} = 0V$ |
| C_{oss} | Output Capacitance | — | 130 | — | | $V_{DS} = -15V$ |
| C_{rss} | Reverse Transfer Capacitance | — | 64 | — | | $f = 1.0\text{MHz}$, See Fig. 5 |

Source-Drain Ratings and Characteristics

| | Parameter | Min. | Typ. | Max. | Units | Conditions |
|----------|--|---|------|-------|-------|--|
| I_S | Continuous Source Current (Body Diode) | — | — | -1.25 | A | MOSFET symbol showing the integral reverse p-n junction diode. |
| I_{SM} | Pulsed Source Current (Body Diode) ① | — | — | -9.6 | | |
| V_{SD} | Diode Forward Voltage | — | — | -1.2 | V | $T_J = 25^\circ\text{C}, I_S = -1.2A, V_{GS} = 0V$ ③ |
| t_{rr} | Reverse Recovery Time | — | 52 | 78 | ns | $T_J = 25^\circ\text{C}, I_F = -1.2A$ |
| Q_{rr} | Reverse Recovery Charge | — | 63 | 95 | nC | $di/dt = 100A/\mu s$ ③ |
| t_{on} | Forward Turn-On Time | Intrinsic turn-on time is negligible (turn-on is dominated by $L_S + L_D$) | | | | |



Notes:

- ① Repetitive rating; pulse width limited by max. junction temperature. (See fig. 11)
- ② $I_{SD} \leq -1.2A, di/dt \leq 100A/\mu s, V_{DD} \leq V_{(BR)DSS}, T_J \leq 150^\circ\text{C}$
- ③ Pulse width $\leq 300\mu s$; duty cycle $\leq 2\%$.
- ④ Surface mounted on FR-4 board, $t \leq 10\text{sec}$.

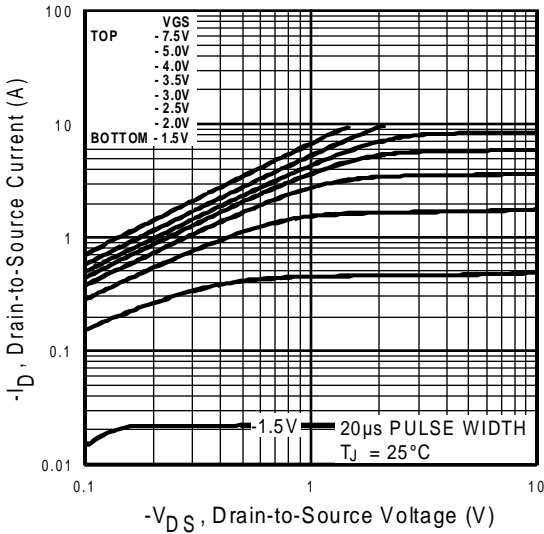


Fig 1. Typical Output Characteristics

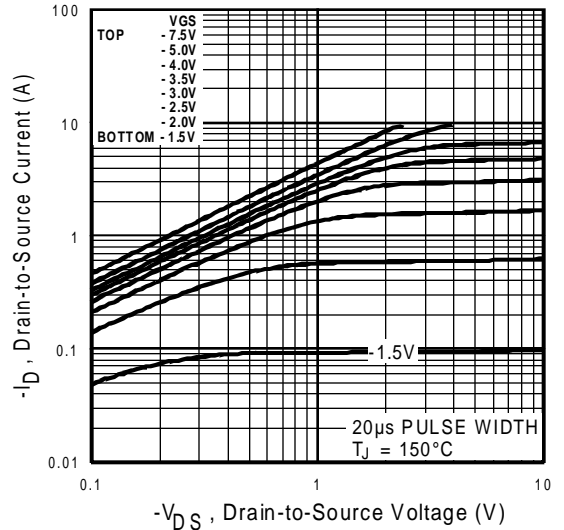


Fig 2. Typical Output Characteristics

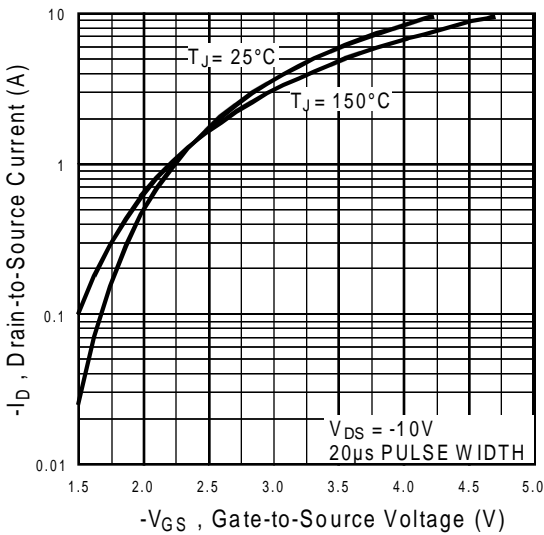


Fig 3. Typical Transfer Characteristics

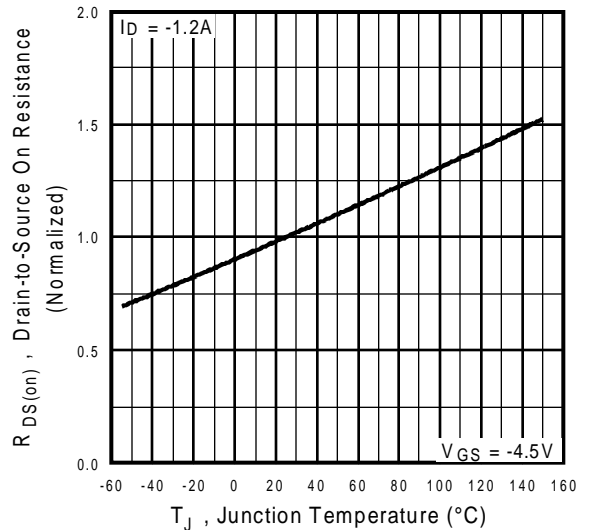


Fig 4. Normalized On-Resistance Vs. Temperature

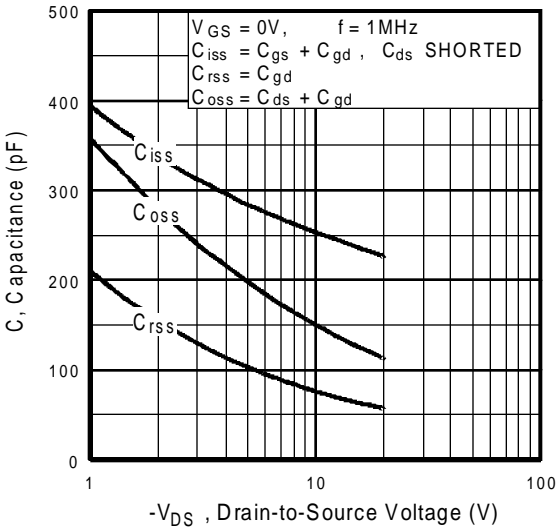


Fig 5. Typical Capacitance Vs. Drain-to-Source Voltage

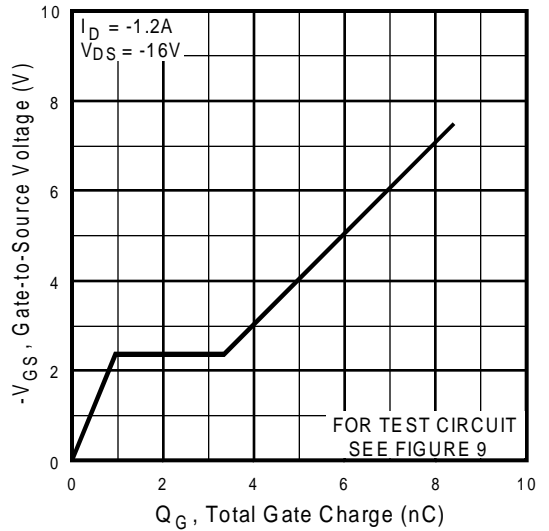


Fig 6. Typical Gate Charge Vs. Gate-to-Source Voltage

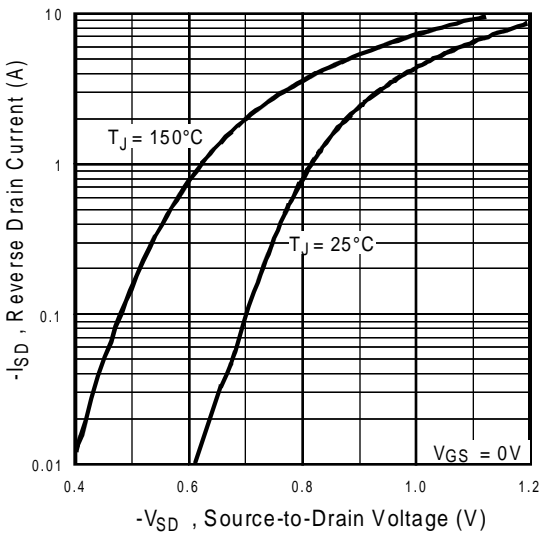


Fig 7. Typical Source-Drain Diode Forward Voltage

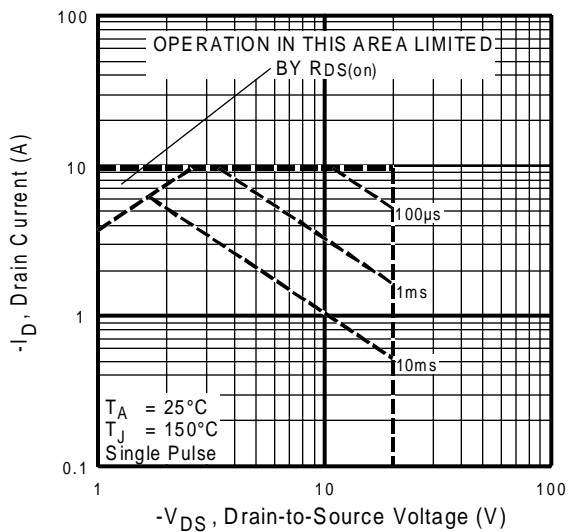


Fig 8. Maximum Safe Operating Area

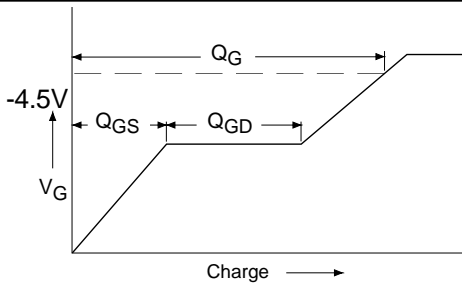


Fig 9a. Basic Gate Charge Waveform

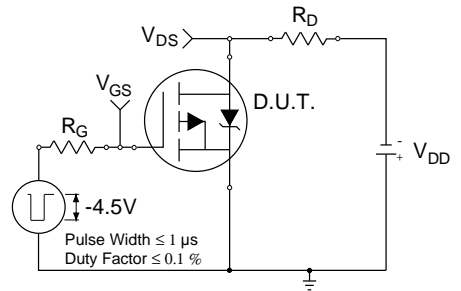


Fig 10a. Switching Time Test Circuit

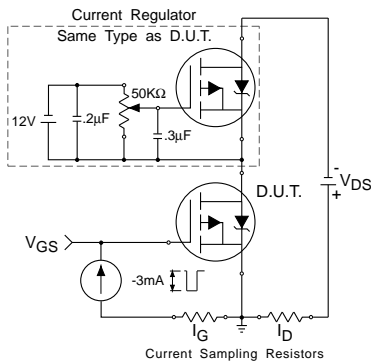


Fig 9b. Gate Charge Test Circuit

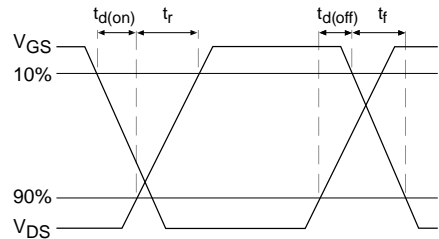


Fig 10b. Switching Time Waveforms

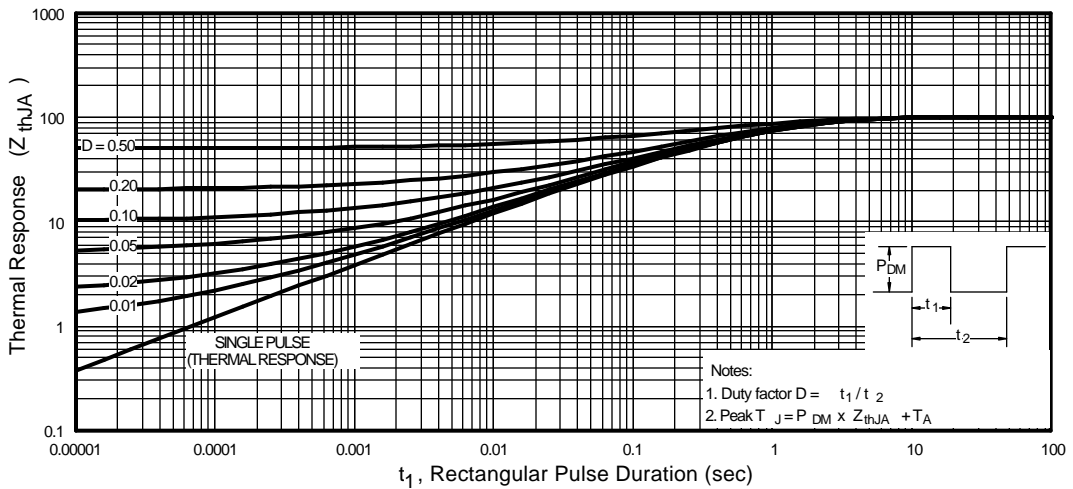
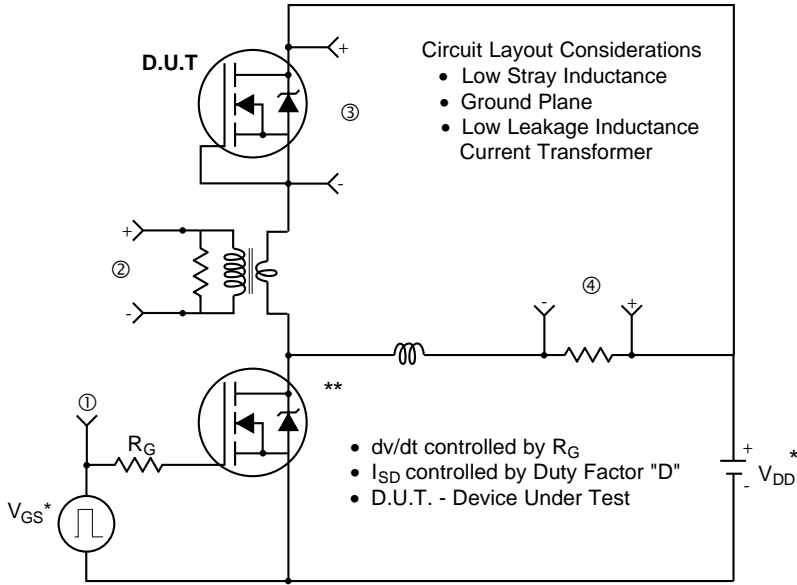


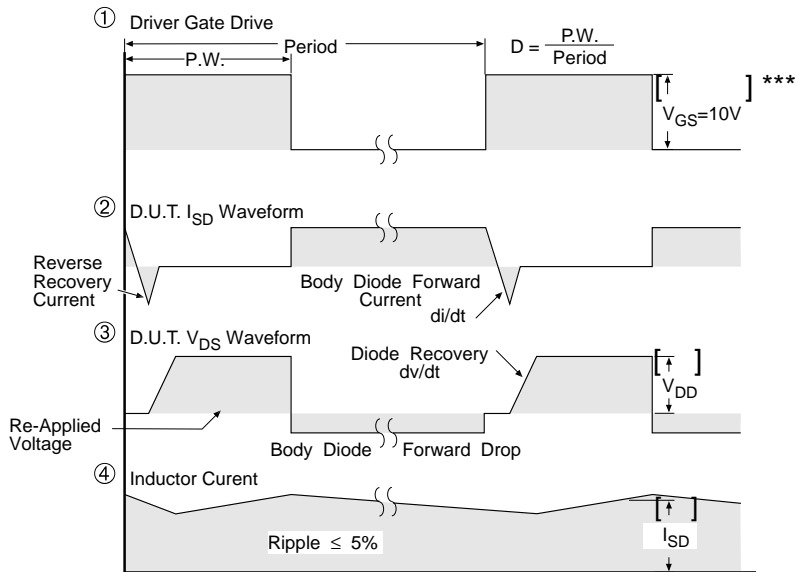
Fig 11. Maximum Effective Transient Thermal Impedance, Junction-to-Ambient

Peak Diode Recovery dv/dt Test Circuit



* Reverse Polarity for P-Channel

** Use P-Channel Driver for P-Channel Measurements



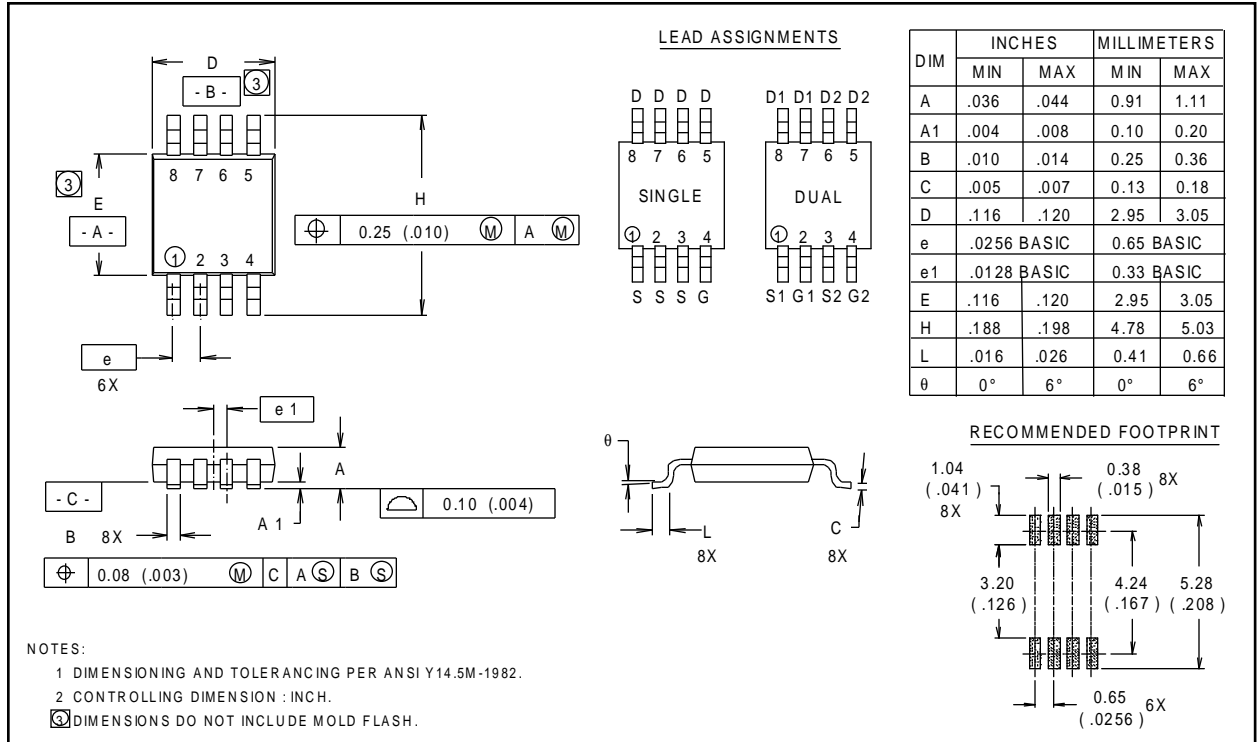
*** $V_{GS} = 5.0V$ for Logic Level and 3V Drive Devices

Fig 12. For P-Channel HEXFETS

Package Outline

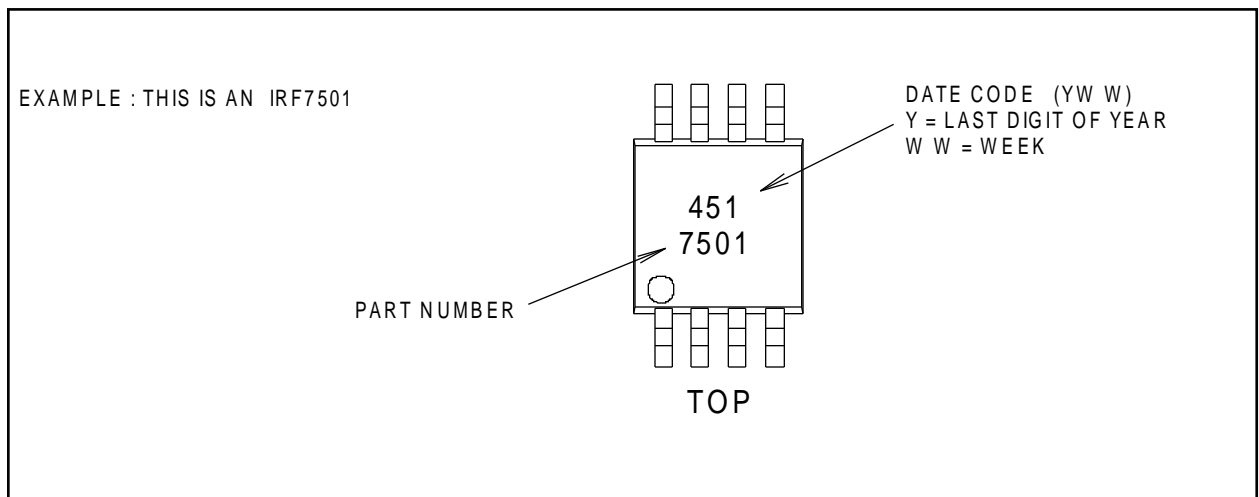
Micro8 Outline

Dimensions are shown in millimeters (inches)



Part Marking Information

Micro8



Tape & Reel Information

Micro8

Dimensions are shown in millimeters (inches)

