

C&K M Series Half-inch Rotary Switches



Features/Benefits

- Multi-pole and multi-positions
- Panel and PCB mounting
- Stainless steel actuator
- Non-shorting contacts

Typical Applications

- Test equipment
- Industrial equipment
- Medical equipment



Specifications

CONTACT RATING: Q contact material: Carry-6 AMPS continuous. Switch-250 mA max. @ 125 V AC or 28 DC. Non-shorting contacts standard. See page L-15 for additional ratings.

ELECTRICAL LIFE: 10,000 make-and-break cycles at 150 mA, 125 V AC or 28 DC.

CONTACT RESISTANCE: Below 20 mΩ typ. initial @ 2-4 V DC, 100 mA, for both silver and gold plated contacts.

INSULATION RESISTANCE: 10¹⁰ Ω min.

DIELECTRIC STRENGTH: 600 Vrms min. @ sea level.

OPERATING & STORAGE TEMPERATURE: -30°C to 85°C.

OPERATING TORQUE: 4-7 ounces-inches typ. initial.

SOLDERABILITY: Per MIL-STD-202F method 208D, or EIA RS-186E method 9 (1 hour steam aging).

NOTE: Any models supplied with Q or G contact material are RoHS compliant. For the latest information regarding RoHS compliance, please go to: www.ittcannon.com/rohs.

NOTE: Specifications and materials listed above are for switches with standard options. For information on specific and custom switches, consult Customer Service Center.

Materials

HOUSING AND BUSHING: Zinc alloy, bright zinc plated, with clear chromate finish.

ACTUATOR: Zinc alloy, nickel plated or stainless steel.

BASE: Diallylphthalate (DAP) or melamine phenolic, with insert molded terminals.

ROTOR: Glass filled polyester (UL 94V-0).

MOVABLE CONTACTS:
Non-shorting: Q contact material: Copper alloy, silver plated. See page L-15 for additional contact materials.

STATIONARY CONTACT & ALL TERMINALS: Q contact material: Copper alloy, silver plated. All terminals insert molded. All terminals present regardless of number of switch positions. See page L-15 for additional contact materials.

CONTACT SPRING: Music wire, phosphate coated.

STOP PIN: Stainless steel.

STOP RING: Brass.

HARDWARE: Nut: Brass, nickel plated; Lockwasher: Steel, nickel plated.

Build-A-Switch

To order, simply select desired option from each category and place in the appropriate box. Available options are shown and described on pages L-13 thru L-17. For additional options not shown in catalog, consult Customer Service Center.



Switch Function

- MA00** SP, 10 pos., 36°
- MA02** SP, 2 pos., 36°
- MA03** SP, 3 pos., 36°
- MA04** SP, 4 pos., 36°
- MA05** SP, 5 pos., 36°
- MA06** SP, 6 pos., 36°
- MA10** SP, 10 pos., 36°
- MB00** DP, 5 pos., 36°
- MB03** DP, 3 pos., 36°
- MB04** DP, 4 pos., 36°
- MB05** DP, 5 pos., 36°
- MC00** SP, 12 pos., 30°
- MC03** SP, 3 pos., 30°
- MC07** SP, 7 pos., 30°
- MC12** SP, 12 pos., 30°
- MD00** DP, 6 pos., 30°
- MD06** DP, 6 pos., 30°
- ME00** SP, 10 pos., 36°
- ME04** SP, 4 pos., 36°
- MF00** DP, 5 pos., 36°
- MG00** SP, 12 pos., 30°
- MH00** DP, 6 pos., 30°

Actuator & Bushing

- L1** .650" long, flatted
- L2** Screwdriver slot, flush
- L3** .650" long, round
- S1** .650" long, flatted
- S2** Screwdriver slot, flush
- S3** .650" long, round
- S6** .785" long, slot

Short/Non-short

- N** Non-shorting contacts

Terminations

- Z** Solder lug
- C** PC Thru-hole

Contact Material

- Q** Silver
- G** Gold over silver

Seal

- D** No seal
- F** Splashproof shaft & panel seal



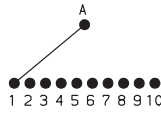
Dimensions are shown: Inch (mm)
Specifications and dimensions subject to change

C&K M Series Half-inch Rotary Switches

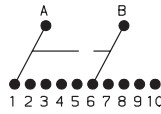
SWITCH FUNCTION

36° INDEXING			
NO. POLES	MODEL NO. WITH STOP PINS	MODEL NO. WITH STOP RINGS	SWITCH FUNCTION
SP	MA00	ME00	10 Positions No Stops
	MA02	—	2 Positions
	MA03	—	3 Positions
	MA04	ME04	4 Positions
	MA05	—	5 Positions
	MA06	—	6 Positions
	MA10	—	10 Positions
DP	MB00	MF00	5 Positions No Stops
	MB03	—	3 Positions
	MB04	—	4 Positions
	MB05	—	5 Positions

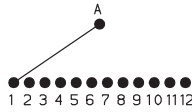
SP MODELS 36° INDEXING SCHEMATIC



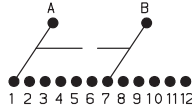
DP MODELS 36° INDEXING SCHEMATIC



SP MODELS 30° INDEXING SCHEMATIC



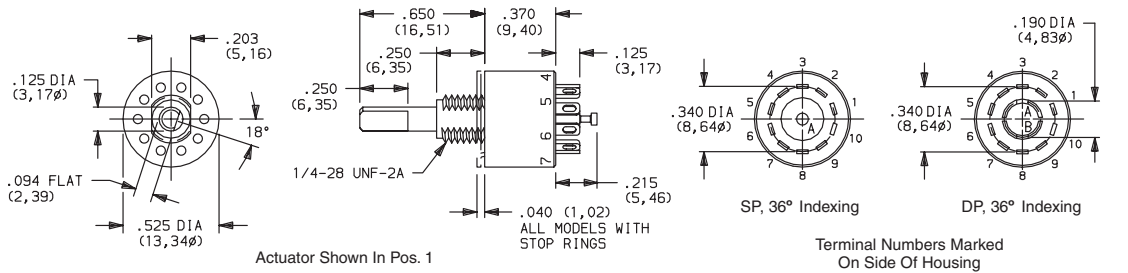
DP MODELS 30° INDEXING SCHEMATIC



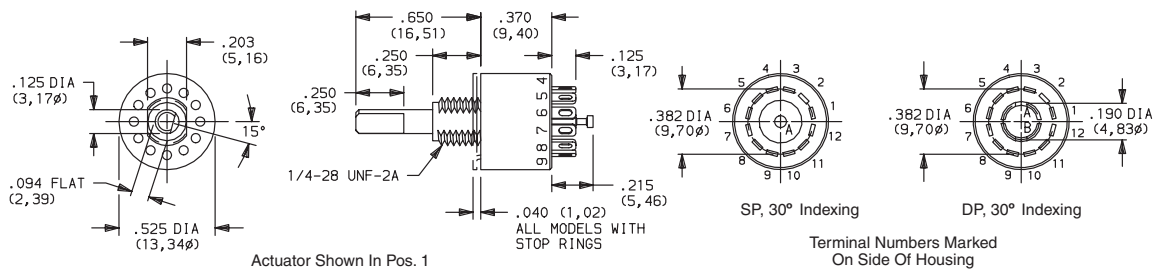
30° INDEXING			
NO. POLES	MODEL NO. WITH STOP PINS	MODEL NO. WITH STOP RINGS	SWITCH FUNCTION
SP	MC00	MG00	12 Positions No Stops
	MC03	—	3 Positions
	MC07	—	7 Positions
DP	MD00	MH00	6 Positions No Stops
	MD06	—	6 Positions

All models with all options when ordered with S1-SB stainless steel actuator options.

NOTE: Number of positions or stops preset at factory (NOTE: MX00 models have full 360 rotation with no stops. Stop pins or stop rings supplied for user-selectable stops, see above). All terminals present regardless of number of switch positions. Hardware is available separately, see section "Technical Data and Additional Hardware".



Part number shown: MA00L1NZQD



Part number shown: MC00L1NZQD



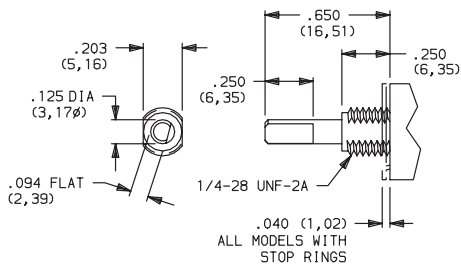
Dimensions are shown: Inch (mm)
Specifications and dimensions subject to change



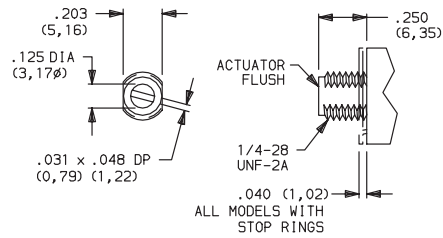
C&K M Series Half-inch Rotary Switches

ACTUATOR (ZINC ALLOY)

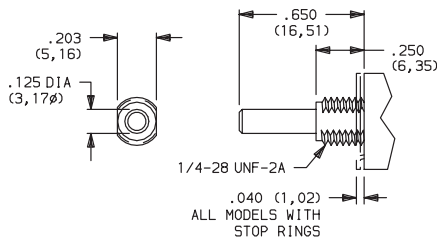
L1 .650" LONG, FLATTED



L2 SCREWDRIVER SLOT, FLUSH



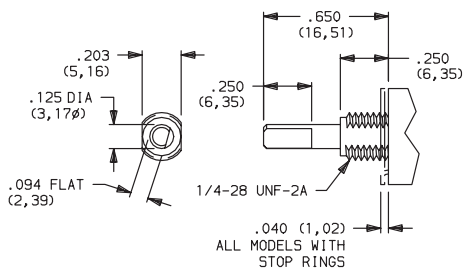
L3 .650" LONG, ROUND



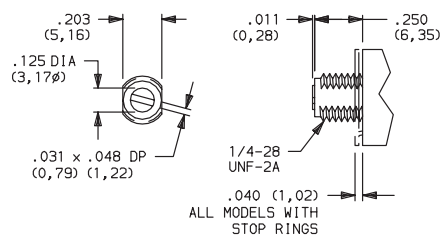
All actuators shown in pos. 1

ACTUATOR (STAINLESS STEEL)

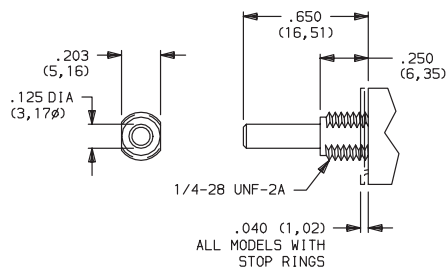
S1 .650" LONG, FLATTED



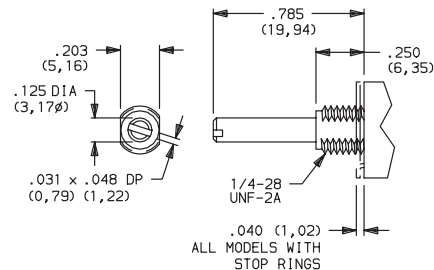
S2 SCREWDRIVER SLOT, FLUSH



S3 .650" LONG, ROUND



S6 .785" LONG, SLOT



All actuators shown in pos. 1

All models UL/CSA when ordered with stainless steel actuators.



Third Angle
Projection

Dimensions are shown: Inch (mm)
Specifications and dimensions subject to change



C&K M Series Half-inch Rotary Switches

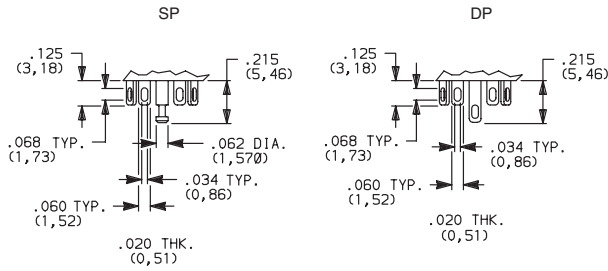
SHORTING/NON-SHORTING CONTACTS

N NON-SHORTING CONTACTS

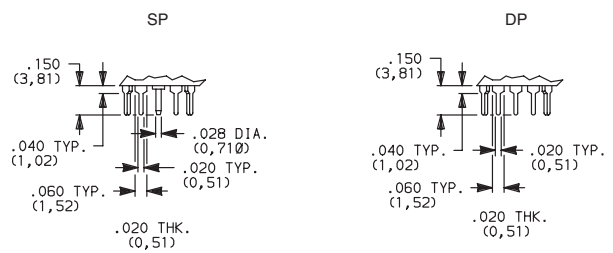
Break-before-make

TERMINATIONS

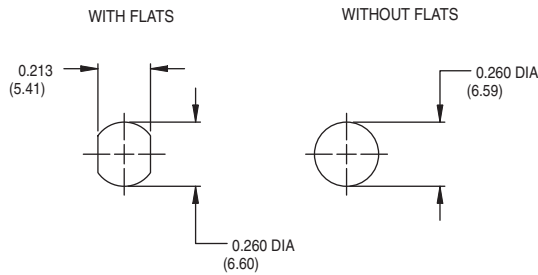
Z SOLDER LUG



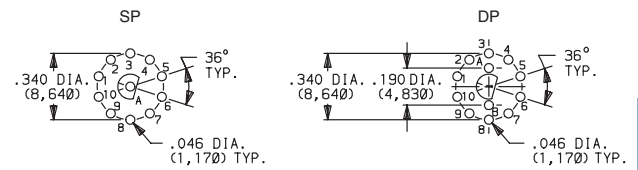
C PC THRU-HOLE



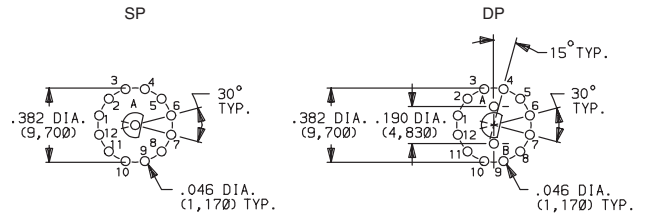
PANEL MOUNTING



PC MOUNTING 36° INDEXING



PC MOUNTING 30° INDEXING



Hardware: All models, one mounting nut and lockwasher supplied standard. MA00 thru MD00 models: two stop pins and adhesive mylar washer supplied. ME00 thru MH00 models: two stop rings supplied. Hardware is available separately, see section "Technical Data and Additional Hardware".

NOTE: Q contact material standard. Terminal numbers marked on side of housing. All terminals insert molded. All terminals present regardless of number of switch positions.

Actuators and schematics shown in pos. 1.

CONTACT MATERIAL

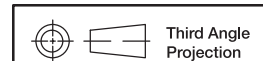
OPTION CODE	RoHS COMPLIANT*	RoHS COMPATIBLE*	CONTACT MATERIAL	TERMINAL PLATING	RATING	
Q	YES	YES	SILVER ^{1,2}	SILVER ²	POWER	CARRY: 6 AMPS CONTINUOUS. SWITCH: 250 mA @ 125 V AC or 28 V DC.
G	YES	YES	GOLD OVER SILVER ^{3,4}	GOLD ⁴	LOW LEVEL/DRY CIRCUIT OR POWER	0.4 VA MAX. @ 20 V AC or DC MAX. or, CARRY: 6 AMPS CONTINUOUS. SWITCH: 250 mA @ 125 V AC or 28 V DC.

* Note: See Technical Data section of this catalog for RoHS compliant and compatible definition and specifications.

- MOVABLE CONTACTS: Non-shorting: Copper alloy, silver plated. Shorting: Zinc alloy, silver plated.
- STATIONARY CONTACTS & ALL TERMINALS: Copper alloy, silver plated.
- MOVABLE CONTACTS: Non-shorting: Copper alloy, with gold plate over nickel plate, over silver plate. Shorting: Zinc alloy, with gold plate.
- STATIONARY CONTACTS & ALL TERMINALS: Copper alloy, with gold plate over nickel plate over silver plate.

NOTE: Any models supplied with Q G contact material are RoHS compliant. For the latest information regarding RoHS compliance, please go to: www.ittcannon.com/rohs.

All models  when ordered with S1-S6 stainless steel actuator options.



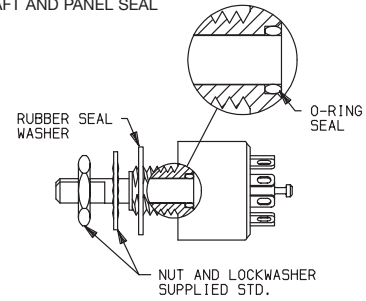
Dimensions are shown: Inch (mm)
Specifications and dimensions subject to change

C&K M Series Half-inch Rotary Switches

SEAL 

D NO EPOXY SEAL

F SPLASHPROOF SHAFT AND PANEL SEAL



Setting Stops With Stop Pins

MA00, MB00, MC00 & MD00 Models Only:

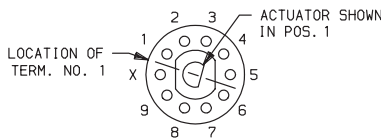
The number of switch positions or stops are adjustable by means of stop pins provided with each switch. Switches are normally shipped with stop pins and hardware in bulk, not installed. Without stop pins, switches have full 360° rotation and no stops. Note that all two pole models begin to repeat when actuated 180° or more.

To set stops, refer to figures 1 & 2. Orient switch so that terminal no. 1 is as shown. Turn actuator to position 1, using flats on bushing and terminal no. 1 as reference. Install CCW stop pin in hole designated 'X'. Install second stop pin in hole number corresponding to the number of positions desired. Note that two pole models will begin to repeat when actuated 180° or more. To retain stop pins, use adhesive mylar washer included; see figure 3.

All models except MX00 models have number of switch positions or stops pre-set at factory and are not adjustable.

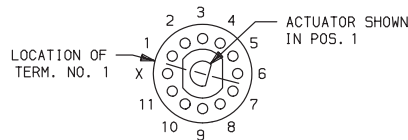
Hardware:

Two stop pins, mounting nut, and lockwasher supplied standard.



36° Indexing Models
Top View

Fig. 1



30° Indexing Models
Top View

Fig. 2

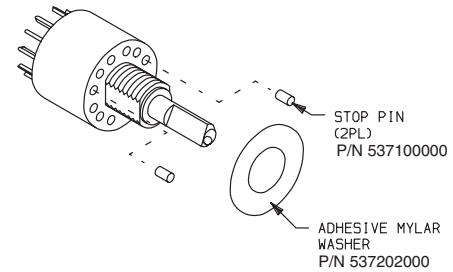


Fig. 3

Setting Stops With Stop Rings

ME00, MF00, MG00 & MH00 Models Only:

The number of switch positions or stops are adjustable by means of stop rings provided with each switch. These models are normally shipped with stop rings and hardware in bulk, not installed. Without stop rings, switches have full 360° rotation and no stops. Note that all two pole models begin to repeat when actuated 180° or more.

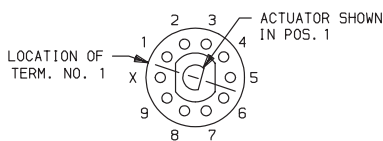
To set stops refer to figures 4 & 5. Orient switch so that terminal no. 1 is as shown. Turn actuator to pos. 1 using flats on bushing and terminal no. 1 as reference. See figure 6 and install inner stop ring with short tab in hole designated 'X'. Install outer stop ring with long tab in hole number corresponding to the number of positions desired. Note that all two pole models begin to repeat when actuated 180° or more. Use mounting nut and lockwasher to retain stop rings.

All MEXX, MFXX, MGXX & MHXX Models (Except MX00 models):

Number of switch positions or stops are preset at factory, but are user adjustable.

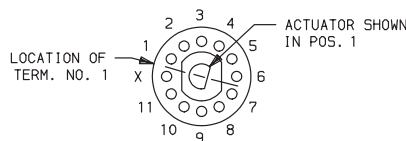
Hardware:

Two stop rings, mounting nut and lockwasher supplied standard.



36° Indexing Models
Top View

Fig. 4



30° Indexing Models
Top View

Fig. 5

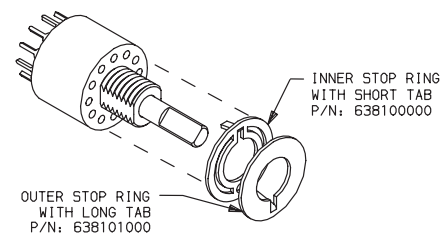
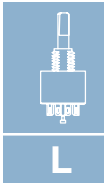


Fig. 6



Dimensions are shown: Inch (mm)
Specifications and dimensions subject to change

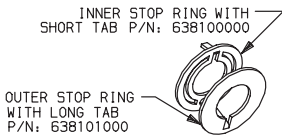


Rotary

C&K M Series Half-inch Rotary Switches

AVAILABLE HARDWARE

Stop Ring



One each required for setting stops.

PART NO.
638100000 INNER-W/SHORT TAB
638101000 OUTER-W/LONG TAB

Washer



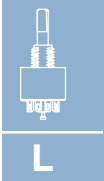
PART NO.
586800000 RUBBER PANEL SEAL
537202000 ADHESIVE MYLAR RETAINS STOP PINS

Stop pins

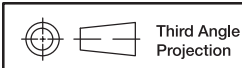


PART NO.
537100000

NOTE: Additional nuts and lockwashers available separately, see section "Technical Data and Additional Hardware".



Rotary



Dimensions are shown: Inch (mm)
 Specifications and dimensions subject to change