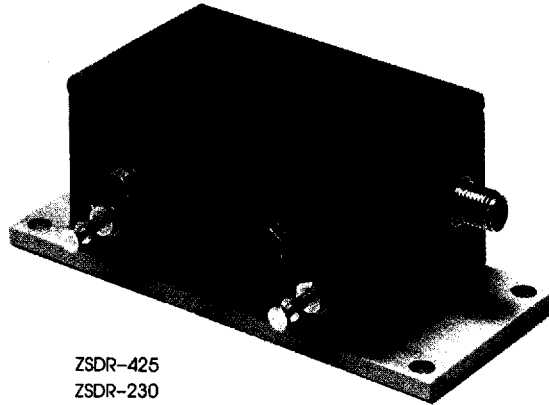


Switches, with TTL Drivers

A-29-25
7-51-11

SPDT/SP4T
pin diode
10 to 3000 MHz

case style selection
outline drawings see Table of Contents



MODEL NO.	TYPE	FREQUENCY MHz f_L - f_U	INSERTION LOSS dB				IN-OUT ISOLATION dB						PRICE \$ Qty. (1-9)	DISTRIBUTOR	
			low-band		upper band		L		M		U			FACTORY	LOCAL
			Typ.	Max.	Typ.	Max.	Typ.	Min.	Typ.	Min.	Typ.	Min.			
TOSW case QG96 TOSW-230 TOSW-425	SPDT SP4T	10-3000 10-2500	1.3 1.1	1.9 1.7	1.8 1.5	2.7 2.5	60 60	40 40	40 40	28 30	35 35	22 22	49.95 69.95	● ●	● ●
ZSDR case CCC-127 case GGG-126 ZSDR-230 ZSDR-425	SPDT SP4T	10-3000 10-2500	1.3 1.1	1.9 1.7	1.8 1.5	2.7 2.5	60 60	40 40	40 40	28 30	35 35	22 22	89.95 109.95	● ●	

L=low range (f_L to $10 f_L$) M=mid range ($10 f_L$ to $f_U/2$) U=upper range ($f_U/2$ to f_U)
lw=low band (f_L to $f_U/2$)

ADDITIONAL SPECIFICATIONS

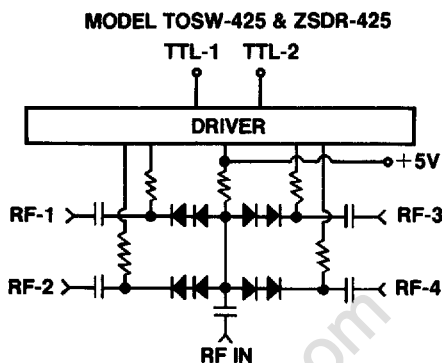
VSWR ("on" state): typ. 1.3, 1.6 max.
Switching time (μ sec): all switches, typ. 2.0, 4.0 max.
Max. RF input for all switches: 20 dBm for low range, 28 dBm for mid range, & 30 dBm for upper range.
Supply voltage for all switches, +5V (10 mA max.)
1 dB compression point for all switches: from 10-100 MHz increase from 6 to 19 dBm. Above 100 MHz, 19 dBm min.
TTL input high threshold 2 volts min.
TTL input low threshold 0.8 volts max.

pin connections

see case style outline drawings

Series	TOSW	
	425	230
Models	425	230
RF IN	8	8
RF-1	4	5
RF-2	6	11
RF-3	10	—
RF-4	12	—
TTL-1	2	3*
TTL-2	3	—
+5 VDC	1	1
CASE GND	5,7,9,11	2,4,6,7,9,10,12

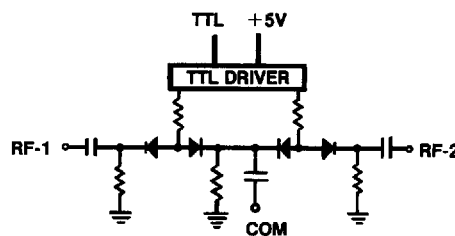
*TTL: pin 3



TTL LOGIC FOR ZSDR-425 & TOSW-425

	TTL-1	TTL-2
RF-1	1	0
RF-2	1	1
RF-3	0	1
RF-4	0	0

MODEL TOSW-230 & ZSDR-230



TTL LOGIC FOR ZSDR-230 & TOSW-230

TTL 1:	RF-1/OFF	RF-2/ON
TTL 0:	RF-1/ON	RF-2/OFF

NOTES:

1. Refer to Table of Contents for quality control procedures, environmental specifications, absolute maximum ratings, and hi-rel testing
2. Prices and specifications subject to change without notice.